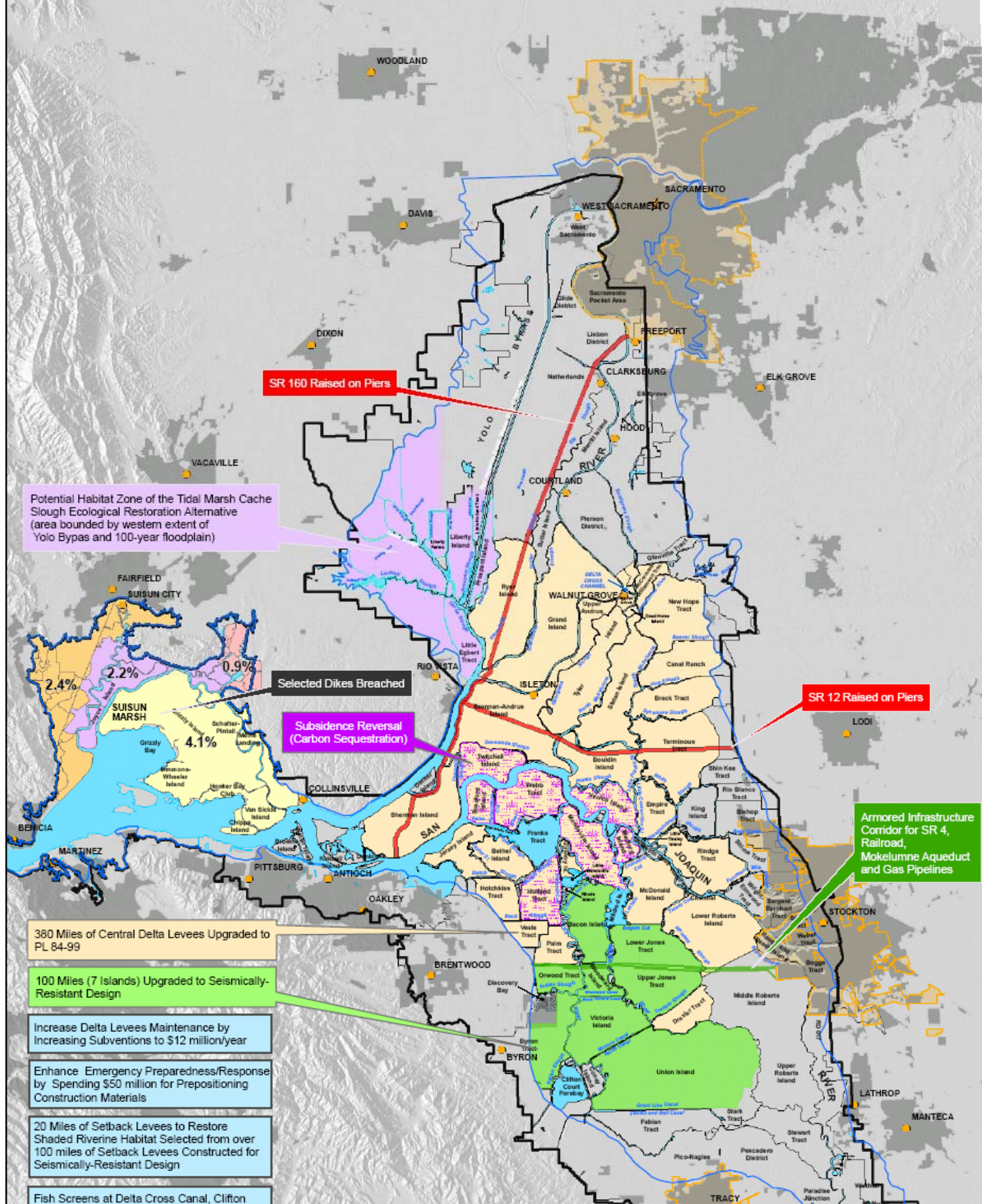


PRELIMINARY



Potential Habitat Zone of the Tidal Marsh Cache Slough Ecological Restoration Alternative (area bounded by western extent of Yolo Bypass and 100-year floodplain)

SR 160 Raised on Piers

Selected Dikes Breached

Subsidence Reversal (Carbon Sequestration)

SR 12 Raised on Piers

Armored Infrastructure Corridor for SR 4, Railroad, Mokelumne Aqueduct and Gas Pipelines

- 380 Miles of Central Delta Levees Upgraded to PL 84-99
- 100 Miles (7 Islands) Upgraded to Seismically-Resistant Design
- Increase Delta Levees Maintenance by Increasing Subventions to \$12 million/year
- Enhance Emergency Preparedness/Response by Spending \$50 million for Prepositioning Construction Materials
- 20 Miles of Setback Levees to Restore Shaded Riverine Habitat Selected from over 100 miles of Setback Levees Constructed for Seismically-Resistant Design
- Fish Screens at Delta Cross Canal, Clifton Court Intake, Tracy Pumping Plant, and River Diversions

Legend

- Legal Delta & Suisun Marsh
- Isolated Conveyance
- Islands for Subsidence Reversal
- Urban Levees
- City Limits
- Urban Areas

No.	Building Block	Costs	
		Capital	Annual
1.1	Improved Delta Levee Maintenance	-	\$12M
1.2b	Upgraded Delta Levees to PL 84-89	\$2.1B	-
1.2d	Upgraded Delta Levees to Seismic Resistant	\$6.6B	-
1.3	Enhanced Emergency Preparedness/Response	\$50M	-
1.5	Land Use Changes to Reduce Island Subsidence	\$600M	\$0.5M
2.1	Raise SR 12 & 160 and Place on Piers	\$4.4B	-
2.2	Construct Armored Infrastructure Corridor	\$880M	-
3.1	Breach dikes in Suisun Marsh	\$1.2B	-
3.2	Cache Slough Restoration	\$921M	-
3.3	Fish Screens at DCC, Tracy PS, Banks PS, and Ag. River Diversions	\$1.7B	-
3.4	Set back levees to Restore Shaded Riverine Habitat (20 miles)	\$1.2B	-
Total		\$20.0B	\$12.5M



26815935

Delta Risk Management Strategy (DRMS)
Phase 2

SCENARIO 1: IMPROVED LEVEES