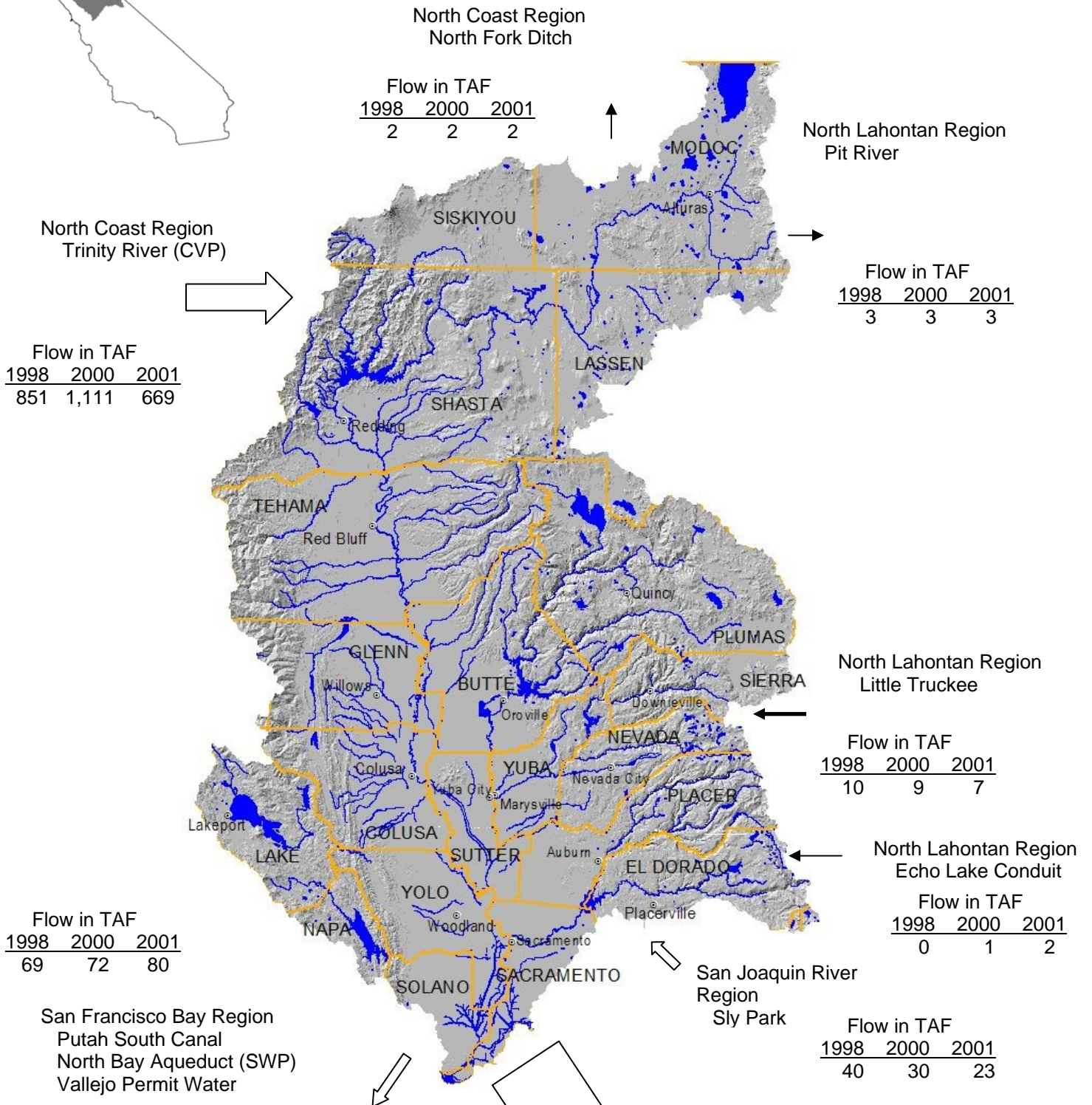


# SACRAMENTO RIVER HYDROLOGIC REGION



## Some Statistics

- Area - 27,246 square miles (17.2 % of State)
- Average annual precipitation – 36.7 inches
- Year 2000 population - 2,593,110
- 2030 projected population – 4,569,490
- Total reservoir storage capacity - 16,146 TAF
- 2000 irrigated crop area - 2,038,700 acres

## SACRAMENTO RIVER HYDROLOGIC REGION WATER BALANCE SUMMARY - TAF

Water Entering the Region – Water Leaving the Region = Storage Changes in Region

	Water Year (Percent of Normal Precipitation)		
	1998 (168%)	2000 (105%)	2001 (67%)
<b>Water Entering the Region</b>			
Precipitation	89,500	57,106	35,895
Inflow from Oregon/Mexico	0	0	0
Inflow from Colorado River	0	0	0
Imports from Other Regions ***	901	1,150	700
<b>Total</b>	<b>90,401</b>	<b>58,256</b>	<b>36,595</b>
<b>Water Leaving the Region</b>			
Consumptive Use of Applied Water * (Ag, M&I, Wetlands)	4,119	5,532	5,456
Outflow to Oregon/Nevada/Mexico	0	0	0
Exports to Other Regions ***	5,194	6,251	4,657
Statutory Required Outflow to Salt Sink	11,039	8,879	5,663
Additional Outflow to Salt Sink	35,112	12,328	3,940
Evaporation, Evapotranspiration of Native Vegetation, Groundwater Subsurface Outflows, Natural and Incidental Runoff, Ag Effective Precipitation & Other Outflows	31,445	26,518	20,439
<b>Total</b>	<b>86,909</b>	<b>59,508</b>	<b>40,155</b>
<b>Storage Changes in the Region</b>			
[+] Water added to storage			
[-] Water removed from storage			
Change in Surface Reservoir Storage	2,752	-1,101	-2,412
Change in Groundwater Storage **	740	-151	-1,148
<b>Total</b>	<b>3,492</b>	<b>-1,252</b>	<b>-3,560</b>

<b>Applied Water *</b> (compare with Consumptive Use)	6,957	9,208	9,096
* Definition - Consumptive use is the amount of applied water used and no longer available as a source of supply. Applied water is greater than consumptive use because it includes consumptive use, reuse, and outflows.			

### **\*\*Footnote for change in Groundwater Storage**

Change in Groundwater Storage is based upon best available information. Basins in the north part of the State (North Coast, San Francisco, Sacramento River and North Lahontan Regions and parts of Central Coast and San Joaquin River Regions) have been modeled – spring 1997 to spring 1998 for the 1998 water year and spring 1999 to spring 2000 for the 2000 water year. All other regions and year 2001 were calculated using the following equation:

$$\text{GW change in storage} = \text{intentional recharge} + \text{deep percolation of applied water} + \text{conveyance deep percolation} - \text{withdrawals}$$

This equation does not include the unknown factors such as natural recharge and subsurface inflow and outflow.

\*\*\* Does not include San Joaquin River Flows coming in from San Joaquin River Region and flowing through San Francisco Bay Region. Amounts are 8,491 taf for 1998, 2,846 taf for 2000, and 1,732 taf for 2001).