

NAME: \_\_\_\_\_

## DELTA PROTECTION COMMISSION LAND USE AND RESOURCE MANAGEMENT PLAN UPDATE

*The Sacramento-San Joaquin Delta is a natural resource of statewide, national, and international significance, containing irreplaceable resources. It is the policy of the State to recognize, preserve, and protect those resources of the Delta for the use and enjoyment of current and future generations.  
(Delta Protection Act of 1992)*



### PRELIMINARY DRAFT PLAN PUBLIC WORKSHOP #2

**Thursday, January 8, 2009, 5:30-9:00 PM**

San Joaquin Farm Bureau Federation,  
3290 North Ad Art Road, Stockton, CA



SACRAMENTO  
STATE

# Workbook Table of Contents

<b>AGENDA</b> .....	<b>1</b>
<b>WORKSHOP GROUND RULES</b> .....	<b>2</b>
<b>THE LAND USE AND RESOURCE MANAGEMENT PLAN</b> .....	<b>3</b>
<b>THE MANAGEMENT PLAN UPDATE PROCESS</b> .....	<b>4</b>
<b>THE STRUCTURE OF THE PRELIMINARY DRAFT PLAN</b> .....	<b>5</b>
<b>GUIDELINES FOR WORKING IN SMALL GROUPS</b> .....	<b>6</b>
<b>SMALL GROUP WORKSHEETS</b> .....	<b>7</b>
INPUT SESSION PART 1A: <u>ENVIRONMENT</u> .....	7
INPUT SESSION PART 1B: <u>LAND USE</u> .....	10
INPUT SESSION PART 1C: <u>AGRICULTURE</u> .....	14
<hr/>	
INPUT SESSION PART 2A: <u>RECREATION and ACCESS (including BOATING)</u> .....	17
INPUT SESSION PART 2B: <u>WATER</u> .....	20
INPUT SESSION PART 2C: <u>LEVEES</u> .....	22
INPUT SESSION PART 2D: <u>UTILITIES and INFRASTRUCTURE</u> ....	24

# AGENDA

**WORKSHOP OBJECTIVE:** To receive public input on the Preliminary Draft of an updated Land Use and Resource Management Plan.

#	TIME	ITEM	PRESENTER
-	5:00 PM	<b>REGISTRATION</b>	
1.	5:30	<b>Welcome, Introductions, Agenda and Ground Rules</b>	<b>Linda Fiack</b> , Delta Protection Commission  <b>Dorian Fougères</b> , Center for Collaborative Policy, CSUS
2.	5:50	<b>Overview of the Preliminary Draft Plan</b>	Linda
3.	6:10	<b>Input Session #1</b> <ul style="list-style-type: none"> <li>• Environment</li> <li>• Land Use</li> <li>• Agriculture</li> </ul>	All
4.	7:00	<b>Group Reports #1</b>	All
5.	7:25	<b><i>BREAK</i></b>	
6.	7:35	<b>Input Session #2</b> <ul style="list-style-type: none"> <li>• Recreation and Access (including Boating)</li> <li>• Water</li> <li>• Levees</li> <li>• Utilities and Infrastructure</li> </ul>	All
7	8:25	<b>Group Reports #2</b>	All
8.	8:50	<b>Next Steps</b>	Linda
9.	9:00	<b>ADJOURN</b>	

## WORKSHOP GROUND RULES

There will be many opportunities for workshop participants to engage group discussion. Participants are asked to adhere to a few key ground rules to allow for productive outcomes.

### **HONOR TIME**

*We have an ambitious agenda, in order to meet our goals it will be important to follow the time guidelines given by the facilitator.*

### **USE COMMON CONVERSATIONAL COURTESY**

*Don't interrupt; use appropriate language; no side-conversations at the table, etc.*

### **ALL IDEAS AND POINTS OF VIEW HAVE VALUE**

*During this meeting you may hear something you do not agree with or you think is "silly" or "wrong." Please remember that the purpose of the forum is to share ideas. All ideas have value in this setting. The goal is to achieve understanding. Simply listen, you do not have to agree, defend or advocate.*

### **HUMOR IS WELCOME**

*BUT humor should never be at someone else's expense.*

### **BE COMFORTABLE**

*Please feel help yourself to refreshments or take personal breaks. If you have other needs please let the facilitator know.*

### **SPELLING DOESN'T COUNT**

*Research indicates that writing on a vertical surface (like blackboards or flipcharts) actually increases the number of spelling errors.*

### **CELL PHONE COURTESY**

*Most of the participants have demanding responsibilities outside of the meeting room. We ask that these responsibilities be left at the door. Your attention is needed for the full meeting. Please turn cell phones, or any other communication item with an on/off switch to "silent." If you do not believe you will be able to participate fully, please discuss your situation with the facilitator.*

### **AVOID EDITORIALS**

*It will be tempting to analyze the motives or intentions of others or to judge things. Please talk about YOUR ideas and thoughts.*

### **OTHER?**



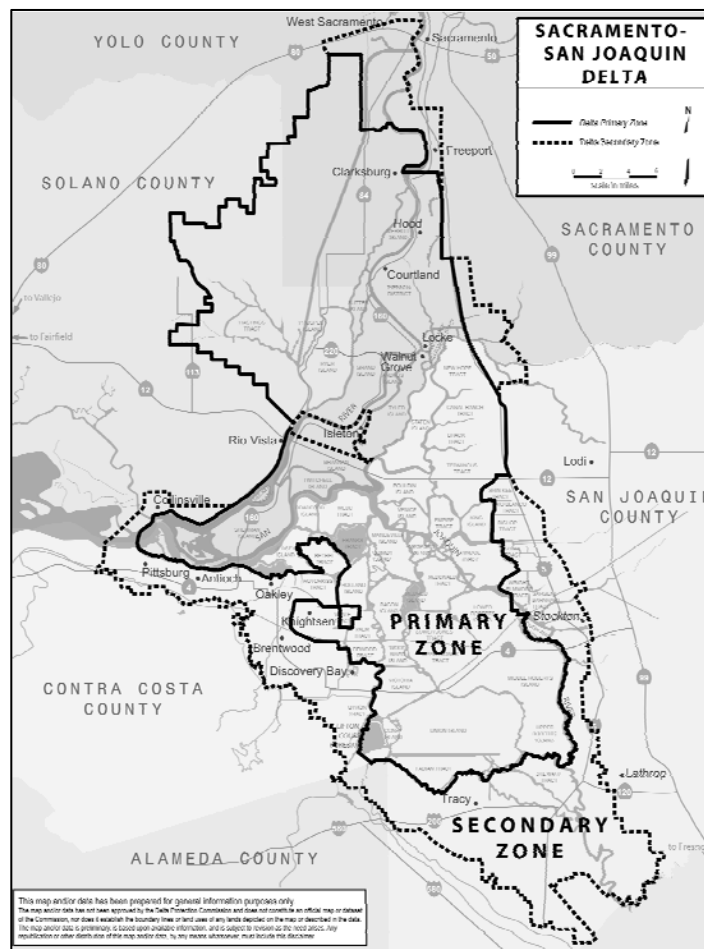
# THE LAND USE AND RESOURCE MANAGEMENT PLAN

Recognizing the threats to the Delta from potential urban and suburban encroachment and the need to protect the area for agriculture, wildlife habitat, and recreational uses, the California Legislature and Governor instituted the Delta Protection Act of 1992. The Act directs the Delta Protection Commission to prepare a comprehensive resource management plan for land uses within the Primary Zone of the Delta. The DPC adopted its first Land Use and Resource Management Plan in 1995.

**The goals of the Plan** as set out in the Act are to

- (1) Protect, maintain, and where possible, enhance and restore the overall quality of the Delta environment, including but not limited to agriculture, wildlife habitat, and recreational activities
- (2) Assure orderly, balanced conservation and development of Delta land resources, and
- (3) Improve flood protection by structural and nonstructural means to ensure an increased level of public health and safety.

Local government General Plans are required to be consistent with the Management Plan with respect to lands located within the Primary Zone.



## THE MANAGEMENT PLAN UPDATE PROCESS

Since the 1995 Plan was prepared, conditions in the Delta and the State policy realm have changed. Climate change has emerged as a major issue, along with new pressures for flood management and endangered species protection. A comprehensive Bay-Delta Conservation Plan is being developed by the California Natural Resources Agency, and the Governor’s Delta Vision initiative has recommended changes in the overall structure of Delta governance, including the role of the Delta Protection Commission. These ongoing events support the need for the DPC to update its Management Plan as identified as a priority in the 2006-2011 Strategic Plan adopted in July of 2006.

As shown in the Timeline below, the DPC conducted an initial round of public workshops in the Delta in July 2008, to receive public input on items that should be revised or be added to an updated Plan. DPC staff and their consultant team, with guidance and oversight from a “Planning Advisory Team”, used those comments to help prepare the Preliminary Draft Plan. A full record of the update process activities, including the Preliminary Draft Plan, can be found at: <http://www.delta.ca.gov/plan/management.asp>

**The purpose of today’s public workshop** is to receive public input on the policies contained in the Preliminary Draft of an updated Land Use and Resource Management Plan. Ideas generated at the workshop will be incorporated into the materials provided to the Commission at its January 22, 2009 meeting. A third round of public workshops will be held in the Delta in February with a focus on a Public Review Draft Plan for potential consideration by the DPC in March of 2009.

Timeline for DPC Management Plan Update Process

Month(s)	Task / Activity
February 2008	Project adopted by DPC
May and June 2008	Document and literature review (background report) completed
June and July 2008	Mini-assessment conducted
July 2008	<b><i>First round of public workshops in the Delta:</i></b> Two-part Project Launch in Walnut Grove and Antioch
	July 24 Commission Meeting: Progress report submitted to DPC
September through December 2008	Planning Advisory Team meets seven times
January 2009	<b><i>Second round of public workshops in the Delta:</i></b> Feedback on preliminary draft text – Walnut Grove and Stockton
	January 22: Commission review and discussion of preliminary draft text
February 2009	<b><i>Third round of public workshops in the Delta:</i></b> Review of public draft, dates and locations to be determined
	Final Planning Advisory Team meeting
March 2009	March 26: Commission action – present draft for finalization and/or adoption (including consideration of public hearing schedule)

## THE STRUCTURE OF THE PRELIMINARY DRAFT PLAN

The Preliminary Draft Plan consists primarily of policies for local governments. It has three sections. Part I, the introduction, describes the planning program and the Plan objectives. Part II includes the Plan's individual Elements. Part III describes the program for implementing the Plan.

### **The policies in Part II are organized into seven elements:**

- (1) Environment
- (2) Utilities and Infrastructure
- (3) Land Use
- (4) Agriculture
- (5) Water
- (6) Recreation and Access, including Boating and Marine Patrol
- (7) Levees

This listing differs slightly from the 1995 Plan, which had Boating as a separate, eighth element, and a ninth element on Implementation.

Within each of the seven elements in the Preliminary Draft Plan there is an introductory discussion that provides **findings on the status and trends of relevant aspects of the Delta**. This differs from the 1995 Plan, which called out findings as a separate section.

Also different from the 1995 Plan, the Preliminary Draft Plan no longer includes **recommended actions**. These will be moved to the DPC's Strategic Plan, which provides immediate next steps for implementing the Management Plan, including updates.

Before a Public Review Draft is released in February, DPC staff will also add two features to improve the accessibility of the Management Plan to interested members of the public, local government, State agencies, special districts, and other users of the Plan. These include **a glossary of key terms** and **a series of cross-reference boxes**. The boxes will identify policy areas that are addressed directly in more than one element of the plan, and point the reader to the companion elements and policies.

## GUIDELINES FOR WORKING IN SMALL GROUPS

You will spend most of the workshop working in small groups. As a group you will be asked to analyze or develop ideas and then report back to the full group on your conversations. Each group will need:

**Facilitator(s):** A facilitator should ensure

- 1) that the group stays focused on the assigned task
- 2) that all participants have an opportunity to share their ideas, and
- 3) that ground rules are used.

DPC staff will be available to serve as facilitators when possible. If a staffperson is not available, one or more group members should serve as the facilitator(s).

**Recorder:** One group member should serve as recorder and write the ideas from the small group's discussion on a flipchart. These notes will be used when reporting back to the full group, and when writing the workshop proceedings. Ask the staff if you need help with this. For each set of questions the recorder should:

- put the table name and a page number on each sheet,
- note the issue being addressed, and
- help prepare a Summary Sheet for the reporter.



**Reporter:** One group member will summarize the small group's main points of discussion for the full group. This person

- should not be a facilitator or staff
- should limit their presentation to the allotted time to be fair to other small groups

**Time Keeper:** All activities will be allotted a specific amount of time to ensure that the overall workshop objective is met. Therefore one group member needs help the group keep track of the allotted time.

**Personal Worksheets:** In addition to the group notes, you may wish to make more in-depth individual or organizational comments. Extra workbooks will be available in each group to do this. These may also be turned in at the end of the session. If you are willing to include your name and contact information, it will help the person preparing the notes if they have questions.



# SMALL GROUP WORKSHEETS

## INPUT SESSION PART 1A: ENVIRONMENT

**Time** \_\_\_\_\_ **Time to End** \_\_\_\_\_  
**Now:** \_\_\_\_\_ **Work on 1A:** \_\_\_\_\_ **Total Time Available for Part 1:** \_\_\_\_\_

**The Element Addressed Here Is:**

**(1) Environment**

- (2) Utilities and Infrastructure
- (3) Land Use
- (4) Agriculture
- (5) Water
- (6) Recreation (incl. Boating)
- (7) Levees

**Plan Goals**

- (1) Protect, maintain, enhance, and restore Delta qualities, including
  - A. agriculture
  - B. wildlife habitat
  - C. recreational activities
- (2) Assure orderly, balanced conservation and development of Delta land resources
- (3) Improve flood protection by structural and non-structural means to ensure an increased level of public health and safety

**Welcome to your group! Take a minute to meet the people with whom you will be working.**

During this section you will focus on the Environment Element. The information you need for Part 1A is on this page and pages 8 and 9.

**Step 1:** As an individual review the goals and policies on pages 8 and 9.

**Step 2:** Thinking about the Environment Policies, as a group spend about 8-10 minutes sharing your answers to Question 1, then move to the Part 1B Worksheet on page 10.

**Q1. Which policies do you think could be changed, added, or deleted to help the Plan better meet its goals? (see left column) Please indicate P-1, P-3, etc.**

## **ENVIRONMENT Goals and Policies**

**GOALS:** Preserve and protect the natural resources of the Delta. Promote protection of remnants of riparian habitat. Promote agriculture practices that maximize wildlife use of lands in the Delta. Promote levee maintenance and rehabilitation to preserve the land areas and channel configurations in the Delta.

P-1. The priority land use of areas of prime soil shall be agriculturally oriented. If commercial agriculture is no longer feasible, land uses that protect other beneficial uses of Delta resources and that would not adversely affect agriculture on surrounding lands or the viability or cost of levee maintenance, may be permitted. If temporarily taken out of agriculture production due to lack of adequate water supply or water quality, the land shall remain reinstatable to agriculturally-oriented uses for the future. (Section 29760.b3,e) (Section 29702.a) (Section 29703)

P-2. Encourage agricultural and land management practices that minimize subsidence of peat soils. Local governments shall support studies of agricultural methods that minimize subsidence and shall assist in educating landowners and managers as to the value of utilizing these methods. (Section 29765.c)

P-3. Lands managed primarily for wildlife habitat should be managed to provide several inter-related habitats, when appropriate. Delta-wide habitat needs should be addressed in development of any wildlife habitat plan. Appropriate programs, such as "Coordinated Resource Management and Planning" (Public Resources Code Section 9408(c)) and "Natural Community Conservation Planning" (Fish and Game Code Section 2800 et seq.) should ensure full participation by local government and property owner representatives. (Section 29705)(Section 29760.b6,b13)

P-4. Support the non-native invasive species control measures being implemented by the California Department of Fish and Game, the California Department of Boating and Waterways, the State Water Resources Control Board, and the Central Valley and San Francisco Bay Regional Water Quality Control Boards, which include controlling the arrival of new species into the Delta.

P-5. Preserve and protect the viability of agricultural areas by including an adequate financial mechanism in any planned conversion of agricultural lands to wildlife habitat. The financial mechanism shall specifically offset the loss of local government and special district revenues necessary to support public services and infrastructure. (Section 29760.b1, b3)

P-6. Implement appropriate buffers within lands converted to wildlife habitat to ensure the ongoing agricultural operations adjacent to the converted lands remain viable. (Section 29703)

P-7. Incorporate, to the maximum extent feasible, suitable and appropriate wildlife protection, restoration and enhancement on existing and future publicly-owned land as part of a Delta-wide plan for habitat management. (Section 29760.b5, b6)

P-8. Encourage the management of suitable agricultural lands to maximize habitat values for migratory birds and other wildlife. Appropriate incentives, such as conservation easements, should be provided to protect this seasonal habitat through donation or through purchase. (Section 29705) (Section 29703) (Section 29756) (Section 29760.b13)

P-9. Preserve and protect lands currently managed for wildlife habitat, such as private duck clubs or publicly-owned wildlife areas, from destruction from inundation. (Section 29705), (Section 29760.b6) (Section 29763.5.e)

P-10. Promote ecological and agricultural tourism in order to preserve the cultural values and economic vitality that reflect the history, natural heritage and human resources of the delta, including the establishment of natural heritage area designations. (Section 29708) (Section 29760.b1)

P-11. Preserve and protect Delta-dependent fisheries and aquatic habitat consistent with balancing other beneficial uses of Delta resources. (Section 29705) (Section 29706) (Section 29760.b5)

# SMALL GROUP WORKSHEETS

## INPUT SESSION PART 1B: LAND USE

**Time** \_\_\_\_\_ **Time to End** \_\_\_\_\_  
**Now:** \_\_\_\_\_ **Work on 1B:** \_\_\_\_\_ **Total Time Available for Part 1:** \_\_\_\_\_

### The Element Addressed Here Is:

- (1) Environment
- (2) Utilities and Infrastructure
- (3) Land Use**
- (4) Agriculture
- (5) Water
- (6) Recreation (incl. Boating)
- (7) Levees

### Plan Goals

- (1) Protect, maintain, enhance, and restore Delta qualities, including
  - A. agriculture
  - B. wildlife habitat
  - C. recreational activities
- (2) Assure orderly, balanced conservation and development of Delta land resources
- (3) Improve flood protection by structural and non-structural means to ensure an increased level of public health and safety

During this section you will focus on the Land Use Element. The information you need for Part 1B is on this page and pages 11 and 12.

**Step 1:** As an individual review the goals and policies on pages 11-13.

**Step 2:** Thinking about the Land Use Policies, as a group spend about 8-10 minutes sharing your answers to Questions 1 and 2, then move to the Part 1C Worksheet on page 14.

---

**Q1. Which policies do you think could be changed, added, or deleted to help the Plan better meet its goals? (see left column) Please indicate P-1, P-3, etc.**

**Q2. Which of the two Options for P-3 do you prefer, and which of the three Options for P-4 do you prefer? Please explain.**

## LAND USE Goals and Policies

**GOALS:** Protect the unique character and qualities of the Primary Zone by preserving the cultural heritage and strong agricultural base of the Primary Zone. Direct new non-agriculturally oriented residential, commercial, and industrial development within the existing unincorporated towns (Walnut Grove, Clarksburg, Courtland, Hood, Locke, and Ryde) and where appropriate services are available.

P-1. The rich cultural heritage and strong agricultural base of the Delta shall be preserved and recognized in public/private facilities, such as museums, recreational trails, community parks, farm stands, community centers, and water access facilities within the Delta. (Section 29708) (Section 29760.b1)

P-2. Local government general plans, as defined in Government Code Section 65300 et seq., and zoning codes shall continue to strongly promote and facilitate agriculture and agriculturally-supporting commercial and industrial uses as the primary land uses in the Primary Zone; recreation land uses shall be supported in appropriate locations and where the recreation uses do not conflict with agricultural land uses or other beneficial uses. (Section 29760.b3, b8)

P-3. **Option 1:** New non-agriculturally oriented residential, recreational, commercial, or industrial development shall ensure that appropriate buffer areas are provided by those proposing new development to prevent conflicts between any proposed use and existing agricultural use. Buffers shall adequately protect integrity of land for existing and future agricultural uses. Appropriate buffer setbacks shall be a minimum of 500 feet, and beyond that distance, the setback determination shall be based on the expertise of local Agricultural Commissioners. (Section 29763.5h)

P-3. **Option 2:** New non-agriculturally oriented residential, recreational, commercial, or industrial development shall ensure that appropriate buffer areas are provided by those proposing new development to prevent conflicts between any proposed use and existing agricultural use. Buffers shall adequately protect integrity of land for existing and future agricultural uses. *Appropriate buffer setbacks shall be established by local Agricultural Commissioners based on applicable general plan policies and criteria included in Right-to-Farm Ordinances adopted by local jurisdictions.*

P-4. **Option 1:** New non-agricultural residential development shall be located within the existing unincorporated towns in the Primary Zone (Walnut Grove, Clarksburg, Courtland, Hood, Locke, and Ryde).

P-4. **Option 2:** New non-agricultural residential development shall be located within the existing unincorporated towns in the Primary Zone (Walnut Grove, Clarksburg, Courtland, Hood, Locke, and Ryde) *where support infrastructure and flood protection are already provided.*

P-4. **Option 3:** New non-agricultural residential development shall be located within the existing unincorporated towns in the Primary Zone (Walnut Grove, Clarksburg, Courtland, Hood, Locke, and Ryde) *where support infrastructure and flood protection will be provided prior to the issuance of building permits.*

P-5. Local government general plans shall address criteria under which general plan amendments in the Primary Zone will be evaluated under Public Resources Code Section 29763.5. Proposed amendments to local government general plans for areas in the Primary Zone shall be evaluated in terms of consistency of the overall goals and program of the Delta Protection Commission. (Section 29763.5)

P-6. Allow water reservoirs that are consistent with the goals of this Plan. (Section 29760.b14)

P-7. New structures shall be set back from levees and areas which may be needed for future levee expansion consistent with local reclamation district regulations and the requirements to be identified in the California Department of Water Resources Central Valley Flood Control Plan, required by SB 5 to be prepared by January 1, 2012. (Section 29763.5.i) (Section 29765.h)

P-8. Local government policies regarding mitigation of adverse environmental impacts under the California Environmental Quality Act may allow mitigation beyond county boundaries, if acceptable to reviewing fish and wildlife agencies and in consultation with recipient jurisdiction, for example in approved mitigation banks. Mitigation in the Primary Zone for loss of agricultural lands in the Secondary Zone may be appropriate if the mitigation program supports continued farming in the Primary Zone. California Government Code Section 51256.3 (Assembly Bill 797) specifically allows an agricultural conservation easement located within the primary or secondary zone of the Delta to be related to Williamson Act contract rescissions in any other portion of the secondary zone without respect to County boundary limitations.

P-9. The implementation of the policies contained in the resource management plan shall not be achieved through the exercise of the power of eminent domain unless requested by the landowner. (Section 29767)

P-10. Maintain spoil sites for dredge material from channels within the Delta and discourage the conversion of existing spoil sites to other uses, as appropriate.

P-11. Local governments may develop programs to cluster agriculture-dependent residential units or transfer development rights (TDRs) to off-site locations. Clustering on a single parcel would be accompanied by conditions to preserve agricultural use and open space values on the balance of the property. TDRs may involve transfers from farms to unincorporated towns or to sites out of the Primary Zone.

P-12. Local governments that pursue clustering or transfer of development rights shall proceed with adoption procedures to implement such programs as part of the local government implementation of the resource management plan consistent with zoning in place on January 1, 1992.

P-13. Encourage a critical mass of farms, agriculturally-related businesses and supporting infrastructure to ensure the economic vitality of agriculture within the Delta. (Section 29702.a) (Section 29703) (Section 29707) (Section 29760.b3) (Section 29763.5) (Section 29765)

P-14. Support the implementation of appropriately-located agricultural labor camps that are ancillary to agricultural operations and are constructed consistent with the requirements of local building codes. (Section 29707) (Section 29760.b1)

P-15. Promote opportunities for establishing National Heritage Areas consistent with other applicable policies included in this Plan. (Section 29708) (Section 29760.b1)

# SMALL GROUP WORKSHEETS

## INPUT SESSION PART 1C: AGRICULTURE

**Time** \_\_\_\_\_ **Time to End** \_\_\_\_\_  
**Now:** \_\_\_\_\_ **Work on 1C:** \_\_\_\_\_ **Total Time Available for Part 1:** \_\_\_\_\_

**The Element Addressed Here Is:**

- (1) Environment
- (2) Utilities and Infrastructure
- (3) Land Use
- (4) Agriculture**
- (5) Water
- (6) Recreation (incl. Boating)
- (7) Levees

**Plan Goals**

- (1) Protect, maintain, enhance, and restore Delta qualities, including
  - A. agriculture
  - B. wildlife habitat
  - C. recreational activities
- (2) Assure orderly, balanced conservation and development of Delta land resources
- (3) Improve flood protection by structural and non-structural means to ensure an increased level of public health and safety

During this section you will focus on the Agriculture Element. The information you need for Part 1C is on this page and pages 15 and 16.

**Step 1:** As an individual review the goal and policies on pages 15 and 16.

**Step 2:** Thinking about the Agriculture Policies, as a group spend about 8-10 minutes sharing your answers to Question 1, then follow the instructions at the bottom of page 16.

---



---

**Q1. Which policies do you think could be changed, added, or deleted to help the Plan better meet its goals? (see left column) Please indicate P-1, P-3, etc.**



## **AGRICULTURE Goal and Policies**

**GOAL:** To support long-term viability of commercial agriculture and to discourage inappropriate development of agricultural lands.

P-1. Support and encourage commercial agriculture in the Delta as a key element in the State's economy and in providing the food supply needed to sustain the increasing population of the State, the Nation, and the world. Also, support agricultural tourism and value-added agricultural production as a means of maintaining the commercial agricultural economy of the Delta. (Section 29702.a) (Section 29703) (Section 29760.b3)

P-2. When possible, conversion of land to non-agriculturally-oriented uses should occur first where productivity is lowest, and then preserve and promote the conservation of agricultural lands that have rich soil, ample and reliable supplies of high quality water suitable for irrigation, a long growing season and a mild climate. The unique physical characteristics of the Delta also require that agricultural landowners participate in maintaining extensive levee systems, providing flood control, and having adequate drainage to allow the lands to be farmed. (Section 29703.a, c)

P-3. Promote recognition of the Delta as a place by educating the local populations about the rich agricultural heritage and ongoing value of maintaining a healthy agricultural economy in the State and in the Delta. (Section 29708)

P-4. Support sustainable agricultural programs that maintain and increase crop production levels and agricultural income in accordance with market demands, including but not limited to wildlife-friendly farming, conservation tillage and non-tillage. (Section 29703)

P-5. Encourage implementation of the necessary plans and ordinances to: maximize agricultural parcel size; reduce subdivision of agricultural lands; protect agriculture and related activities; protect agricultural land from conversion to non-agriculturally-oriented uses; and clearly define areas in that jurisdiction where urban land uses are appropriate and where agriculturally-oriented land uses are appropriate. An optimum package of regulatory and incentive programs would include: (1) an urban limit line; (2) minimum parcel size consistent with local agricultural practices and needs; (3) strict subdivision regulations regarding subdivision of agricultural lands to ensure that subdivided lands will continue to contain agriculturally-oriented land uses; (4) require adequate buffers between agricultural and non-agricultural land uses particularly residential development outside but adjacent to the Primary Zone; (5) an agriculture element of the general plan; (6) a right-to-farm ordinance; and (7) a conservation easement program. (Section 29702.a) (Section 29703) (Section 29713) (Section 29760.b3) (Section 29760.b12) (Section 29760.b13) (Section 29763.5g) (Section 29765.g)

P-6. Encourage acquisition of agricultural conservation easements as mitigation for projects within each county. Encourage transfer of development rights within land holdings, from parcel to parcel within the Delta, and where appropriate, to sites outside the Delta. Promote use of environmental mitigation in agricultural areas only when it is consistent and compatible with ongoing agricultural operations and when developed in appropriate locations designated on a countywide or Deltawide habitat management plan. (Section 29703.b) (Section 29713) (Section 29756) (Section 29760.b13)

P-7. Encourage management of agricultural lands which maximize wildlife habitat seasonally and year-round, through techniques such as fall and winter flooding, leaving crop residue, creation of mosaic of small grains and flooded areas, wildlife friendly farming, controlling predators, controlling poaching, controlling public access, and others. (Section 29703.b) (Section 29705) (Section 29760.b13)

P-8. Retain agricultural zoning as described in zoning codes in place January 1, 1992. (Section 29760.b3)

**NOW THAT YOU HAVE COMPLETED PART 1C, IT IS TIME TO SHARE WITH THE OTHER GROUPS WHAT YOU HAVE BEEN TALKING ABOUT.**

- Pick your reporter/spokesperson.
- Spend about 5 minutes putting together a 2 minute presentation.
- Remember to mark your flip charts and complete a group worksheet! This will help the note-taker greatly.

# INPUT SESSION PART 2A: RECREATION and ACCESS (including BOATING)

**Time** \_\_\_\_\_ **Time to End** \_\_\_\_\_  
**Now:** \_\_\_\_\_ **Work on 2A:** \_\_\_\_\_ **Total Time Available for Part 1:** \_\_\_\_\_

### The Element Addressed Here Is:

- (1) Environment
- (2) Utilities and Infrastructure
- (3) Land Use
- (4) Agriculture
- (5) Water
- (6) Recreation (incl. Boating)**
- (7) Levees

### Plan Goals

- (1) Protect, maintain, enhance, and restore Delta qualities, including
  - A. agriculture
  - B. wildlife habitat
  - C. recreational activities
- (2) Assure orderly, balanced conservation and development of Delta land resources
- (3) Improve flood protection by structural and non-structural means to ensure an increased level of public health and safety

During this section you will focus on the Recreation (including Boating) Element. The information you need for Part 2A is on this page and pages 18 and 19.

**Step 1:** As an individual review the goals and policies on pages 18 and 19.

**Step 2:** Thinking about the Recreation Policies, as a group spend about 8-10 minutes sharing your answers to Question 1, then move to the Part 2B Worksheet on page 20.

---



---

**Q1. Which policies do you think could be changed, added, or deleted to help the Plan better meet its goals? (see left column)** Please indicate P-1, P-3, etc.

## **RECREATION and ACCESS (incl. BOATING) Goals and Policies**

**GOAL:** To promote continued recreational use of the land and waters of the Sacramento-San Joaquin Delta; to ensure that needed facilities that allow such uses are constructed, maintained, and supervised; to protect landowners from unauthorized recreational uses on private lands; and to maximize dwindling public funds for recreation by promoting public-private partnerships and multiple use of Delta lands.

P-1. Ensure that plans are developed and funds are allocated for ongoing maintenance and supervision of existing public recreation areas.

P-2. Encourage expansion of existing private water-oriented commercial recreational facilities and ensure any new recreational facilities will be adequately supervised and maintained, appropriate access is provided, and agriculture and wildlife habitat are not adversely affected. (Section 29702.b) (Section 29712) (Section 29760.b8)

P-3. Develop funding and siting criteria for establishing new recreation areas.

P-4. Funding criteria should ensure adequate funding for recreational project development and long-term maintenance and supervision. Siting criteria should ensure adequate public access and minimal adverse impacts on: agricultural land uses, levees, and public drinking water supply intakes, and identified wetlands, habitat and other sensitive areas.

P-5. Encourage new regional recreational opportunities, such as Delta-wide trails. Also, encourage opportunities for water trails and related amenities. (Section 29702.a) (Section 29712.a) (Section 29760.b8) (Senate Bill 1556 - Senator Torlakson)

P-6. Encourage provision of publicly funded amenities in or adjacent to and which complement private facilities, particularly if the private facility will agree to supervise and manage the facility (fishing pier, overlook, picnic area) thus lowering the long-term cost to the public.

P-7. Support multiple uses of Delta agricultural lands, such as seasonal use for hunting, or improved parking and access sites. (Section 29702.a)

P-8. Support improved access for bank fishing along State highways and county roads where safe and adequate parking, policing, garbage cleanup, sanitation facilities, and fire suppression can be provided and where proper rights-of-access have been acquired from the landowner. (Section 29765.e)

P-9. Include adequate restrooms, pumpout facilities, trash containers, oily waste disposal facilities, and other facilities necessary to meet the needs of marina patrons and tenants for any new, renovated, or expanded marinas.

P-10. Encourage the development of funding and implementation strategies by appropriate governing bodies to remove abandoned vessels from county waterways to avoid pollution of Delta water and remove hazards to navigation. (Section 29712.a) (Section 29760.b11) (Section 29763.5.j)

P-11. Promote and encourage Delta-wide communication, coordination, and collaboration on boating and waterway-related programs including but not limited to the removal of abandoned vessels, invasive species, clean boating, and emergency response in the Delta. (Section 29712) (Section 29760.b11)

# SMALL GROUP WORKSHEETS

## INPUT SESSION PART 2B: WATER

**Time** \_\_\_\_\_ **Time to End** \_\_\_\_\_  
**Now:** \_\_\_\_\_ **Work on 2B:** \_\_\_\_\_ **Total Time Available for Part 1:** \_\_\_\_\_

**The Element Addressed Here Is:**

- (1) Environment
- (2) Utilities and Infrastructure
- (3) Land Use
- (4) Agriculture
- (5) Water**
- (6) Recreation (incl. Boating)
- (7) Levees

**Plan Goals**

- (1) Protect, maintain, enhance, and restore Delta qualities, including
  - A. agriculture
  - B. wildlife habitat
  - C. recreational activities
- (2) Assure orderly, balanced conservation and development of Delta land resources
- (3) Improve flood protection by structural and non-structural means to ensure an increased level of public health and safety

During this section you will focus on the Water Element. The information you need for Part 2B is on this page and page 21.

**Step 1:** As an individual review the goal and policies on pages 21.

**Step 2:** Thinking about the Water Policies, as a group spend about 8-10 minutes sharing your answers to Questions 1 and 2, then move to the Part 2C Worksheet on page 22.

---



---

**Q1. Which policies do you think could be changed, added, or deleted to help the Plan better meet its goals? (see left column) Please indicate P-1, P-3, etc.**

**Q2. Which of the two Options for P-5 do you prefer? Please explain.**

## WATER Goal and Policies

**GOAL:** Protect and enhance long-term water quality in the Delta for agriculture, municipal, industrial, water-contact recreation, and fish and wildlife habitat uses, as well as all other designated beneficial uses.

P-1. Appropriate State and federal agencies shall be strongly encouraged to manage salinity in Delta waters, as well as the timing and quantity of Delta water inflows and outflows, appropriately to allow full agricultural use of Delta irrigated agricultural lands, to provide habitat for aquatic life, and to meet State water quality requirements for drinking water, and municipal and industrial uses. (Section 29705) (Section 29760.b7)

P-2. Ensure that design, construction, and management of any flooding program to provide seasonal wildlife and aquatic habitat on agricultural lands, duck club lands and additional seasonal and tidal wetlands, shall incorporate "best management practices" to minimize vectors including mosquito breeding opportunities and shall be coordinated with the local vector control districts. (Each of the four vector control districts in the Delta provides specific wetland/mosquito management criteria to landowners within their district.) (Section 29704)

P-3. Water agencies at local, State, and federal levels shall work together to ensure that adequate Delta water quality standards are set and met and that beneficial uses of State waters are protected. (Section 29704)

P-4. Design and develop habitat restoration programs to minimize existing levels of mercury bio-methylization within the Delta. Habitat restoration programs shall be consistent with the Delta mercury TMDL, as adopted by the State Water Resources Control Board. (Section 29760.b6)

P-5. **Option 1:** Continue to have Delta waterways serve as a *primary* transportation system moving water to and from the State's natural and developed water systems.

P-5. **Option 2:** Continue to have Delta waterways serve as a transportation system moving water to and from the State's natural and developed water systems.

P-6. Ensure that Delta water rights and water contracts are respected and protected against unilateral changes, including area of origin water rights and riparian water rights downstream of conveyance intakes.

# SMALL GROUP WORKSHEETS

## INPUT SESSION PART 2C: LEVEES

**Time** \_\_\_\_\_ **Time to End** \_\_\_\_\_  
**Now:** \_\_\_\_\_ **Work on 2C:** \_\_\_\_\_ **Total Time Available for Part 1:** \_\_\_\_\_

**The Element Addressed Here Is:**

- (1) Environment
- (2) Utilities and Infrastructure
- (3) Land Use
- (4) Agriculture
- (5) Water
- (6) Recreation (incl. Boating)
- (7) Levees**

**Plan Goals**

- (1) Protect, maintain, enhance, and restore Delta qualities, including
  - A. agriculture
  - B. wildlife habitat
  - C. recreational activities
- (2) Assure orderly, balanced conservation and development of Delta land resources
- (3) Improve flood protection by structural and non-structural means to ensure an increased level of public health and safety

During this section you will focus on the Levees Element. The information you need for Part 2C is on this page and page 23.

**Step 1:** As an individual review the goals and policies on page 23.

**Step 2:** Thinking about the Levees Policies, as a group spend about 8-10 minutes sharing your answers to Question 1, then move to the Part 2D Worksheet on page 24.

---

**Q1. Which policies do you think could be changed, added, or deleted to help the Plan better meet its goals? (see left column) Please indicate P-1, P-3, etc.**



## LEVEES Goals and Policies

**GOALS:** Support the improvement, emergency repair, and long-term maintenance of Sacramento-San Joaquin Delta levees by coordinating permit reviews and guidelines for levee maintenance. Levee rehabilitation, emergency repair, and long-term maintenance shall have priority over other uses of levee areas. Encourage adaptive implementation of levee improvements to address varying conditions associated with climate change. Protect the Delta land form by making cost-effective levee investments in order to preserve the economy and character of the Delta, to the maximum extent feasible.

P-1. Appropriate governing bodies shall carefully and prudently carry out their responsibilities to regulate new construction within flood hazard areas to protect public health, safety, and welfare. These responsibilities shall be carried out consistent with currently applicable regulations concerning the Delta<sup>1</sup>. Increased flood protection shall not result in densities beyond those allowed under zoning and general plan designations in place on January 1, 1992, for lands in the Primary Zone.

P-2. Support programs for emergency levee repairs and better coordinated between local, State, and federal governments. The programs shall include: interagency agreements and coordination; definition of an emergency; designation of emergency funds; emergency contracting procedures; emergency permitting procedures; and other necessary elements. (Section 29704) (Section 29760.b4)

P-3. Support efforts to address levee encroachments that are detrimental to levee maintenance.

P-4. Support funding assistance for small urban communities within the Delta to attain 200-year levee standards.

P-5. Support using Public Law (PL) 84-99 (33 USC Section 701), administered by the U.S. Army Corps of Engineers, as a minimum design standard for levees.

P-6. Support stockpiling rock in the Delta, including in the western Delta, for levee emergency response.

P-7. Support a multi-year funding commitment to restore non-project levees and levees outside the State Plan of Flood Control.

P-8. Support and advocate for the Delta Long-Term Management Strategy (LTMS) and the beneficial use of dredged material for levee rehabilitation.

P-9. Seek funding for and support programs to make cost-effective levee investments in order to preserve the economy and character of the Delta, to the maximum extent feasible.

---

<sup>1</sup> These regulations currently include AB 5 (2007 Chapter 366), SB 17 (Chapter 365), AB 70 (Chapter 367), AB 156 (Chapter 368), SB 5 (Chapter 364), an AB 162 (Chapter 369).

# INPUT SESSION PART 2D: UTILITIES and INFRASTRUCTURE

**Time** \_\_\_\_\_ **Time to End** \_\_\_\_\_  
**Now:** \_\_\_\_\_ **Work on 2D:** \_\_\_\_\_ **Total Time Available for Part 1:** \_\_\_\_\_

## The Element Addressed Here Is:

- (1) Environment
- (2) Utilities and Infrastructure**
- (3) Land Use
- (4) Agriculture
- (5) Water
- (6) Recreation (incl. Boating)
- (7) Levees

## Plan Goals

- (1) Protect, maintain, enhance, and restore Delta qualities, including
  - A. agriculture
  - B. wildlife habitat
  - C. recreational activities
- (2) Assure orderly, balanced conservation and development of Delta land resources
- (3) Improve flood protection by structural and non-structural means to ensure an increased level of public health and safety

During this section you will focus on the Utilities and Infrastructure Element. The information you need for Part 2D is on this page and pages 25 and 26.

**Step 1:** As an individual review the goals and policies on pages 25 and 26.

**Step 2:** Thinking about the Utilities and Infrastructure Policies, as a group spend about 8-10 minutes sharing your answers to Question 1, then follow the instructions at the bottom of page 26.

---

---

**Q1. Which policies do you think could be changed, added, or deleted to help the Plan better meet its goals? (see left column)** Please indicate P-1, P-3, etc.

## **UTILITIES and INFRASTRUCTURE Goals and Policies**

**GOALS:** Protect the Sacramento-San Joaquin Delta from excessive construction of utilities and infrastructure facilities, including those that support uses and development outside the Delta. Where construction of new utility and infrastructure facilities is appropriate, ensure the impacts of such new construction on the integrity of levees, wildlife, and agriculture are minimized.

P-1. Locate new transmission lines and utilities in existing utility or transportation corridors, or along property lines, in order to minimize construction impacts within the Delta. Before new transmission lines are constructed, the utility should determine if an existing line has available capacity. To minimize impacts on agricultural practices, utility lines shall follow edges of fields. Pipelines in utility corridors or existing rights-of-way shall be buried to avoid adverse impacts to terrestrial wildlife. Pipelines crossing agricultural areas shall be buried deep enough to avoid conflicts with normal agricultural or construction activities. Utilities shall be designed and constructed to minimize any detrimental effect on levee integrity or maintenance.

P-2. Ensure that new houses built in the Delta agricultural areas but outside of Delta communities continue to be served by independent potable water and wastewater treatment facilities. Agricultural uses that require waste water treatment shall provide adequate infrastructure improvements or pay to expand existing facilities, and not overburden the existing limited community resources. The appropriate governing body shall ensure that new or expanded construction of wastewater disposal systems meet the highest feasible standards/conditions and are not growth inducing. Independent treatment facilities shall be monitored to ensure no cumulative adverse impact to groundwater supplies.

P-3. Ensure that new municipal sewage treatment facilities (including storage ponds) and new areas for disposal of municipal sewage effluent and sludge to support development or business outside of the Delta Primary Zone are not located within the Primary Zone. The Rio Vista project, as described in the adopted Final Environmental Impact Report for such project, and the Ironhouse Sanitary District use of Jersey Island for disposal of treated wastewater and biosolids are exempt from this policy.

P-4. Encourage recycling programs for metals, glass, paper, cardboard, and organic materials in order to minimize waste generation. Recycling facilities for these materials should be centralized to serve Delta residents, visitors, and businesses. High groundwater tables and subsiding soil make the Delta an inappropriate location for solid waste disposal.

P-5. Maintain roads within the Delta to serve the existing agricultural uses and supporting commercial uses, recreational users, and Delta residents. Where possible, commuter traffic and through traffic should be discouraged. Promote 'traffic calming' measures when determined feasible.

P-6. Allow air transportation in the Delta to continue to serve Delta residents and agriculture-related businesses. Due to subsidence, transmission lines, high winds, fog, and high raptor and waterfowl use, the Primary Zone is not an appropriate location for new or expanded general aviation airports.

P-7. Encourage the provision of infrastructure for new water, recreational, and scientific research facilities, as cited in the Land Use Element.

**NOW THAT YOU HAVE COMPLETED PART 2D, IT IS ONCE AGAIN TIME TO SHARE WITH THE OTHER GROUPS WHAT YOU HAVE BEEN TALKING ABOUT.**

- Pick your reporter/spokesperson.
- Spend about 5 minutes putting together a 2 minute presentation.
- Remember to mark your flip charts and complete a group worksheet! This will help the note-taker greatly.