
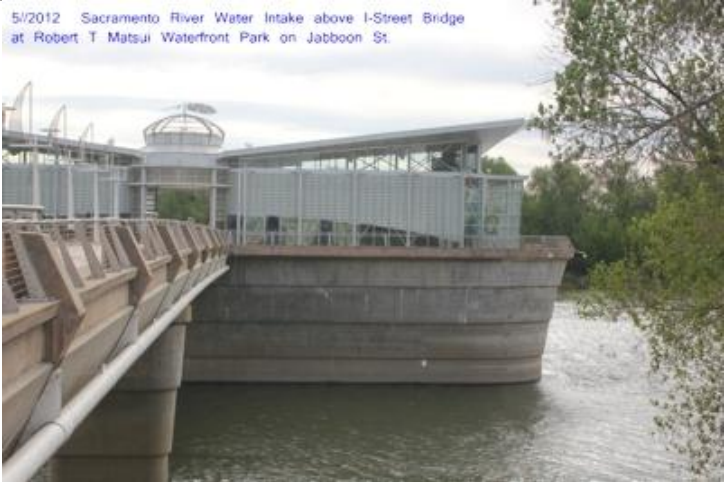


## NEW WATER INTAKES ON THE SACRAMENTO RIVER ARE BEING BUILT WHILE EVERYONE DISCUSSES BDCP & CONVEYANCE OPTIONS.

The new water diversion intakes or facilities have been constructed over the last 10 years, while CALFED and the BDCP planning process continues. Does the CALSIM and DSM2 computer modeling account for all of these extra freshwater diversions from the Sacramento River north of the Delta? Historical records indicate an average of 17 million acre feet per year flowed past the I-Street bridge on the Sacramento River and into the Delta. How much water is left to flow past the I-Street bridge after the new intakes are completed? (See the excel spreadsheet of the same topic)

List compiled by N. Suard, Esq, <http://www.snugarbor.net> for distribution to Delta residents upon request. 5/2/2012

	<b>Diversion Capacity</b>	<b>Links, location and details</b>
 <p>New water intake on the American River near Sac State 4/28/2012 photo</p>	From 105 mgd expanded to 200 mgd	<p>Fairbarn Water Treatment Plant Expansion Built between 2006-2008. Called the Sacramento River Water Treatment Intake Expansion and the American River Mobile Bed Intake Model</p> <p>Photo taken from the bridge crossing American River at the Cal State Sacramento campus in Sacramento</p> <p><a href="http://www.nhcweb.com/upload/muni_indus/INTK_American_River.pdf">http://www.nhcweb.com/upload/muni_indus/INTK_American_River.pdf</a>  <a href="http://www.nhcweb.com/section.asp?pageid=7077">http://www.nhcweb.com/section.asp?pageid=7077</a>  <a href="http://www.bbinfrastructureinc.com/projects/water/fairbairn.htm">http://www.bbinfrastructureinc.com/projects/water/fairbairn.htm</a></p>
 <p>5/2012 Sacramento River Water Intake above I-Street Bridge at Robert T Matsui Waterfront Park on Jabboon St.</p>	160 MGD	<p>SACRAMENTO RIVER WATER INTAKE FACILITY AT ROBERT T MATSUI WATERFRONT PARK IN SACRAMENTO</p> <p><a href="http://www.bbinfrastructureinc.com/projects/water/sacramento.htm">http://www.bbinfrastructureinc.com/projects/water/sacramento.htm</a></p>
Just starting construction	225 CFS	<p>PCWA American River Intake facility upstream of Folsom Dam</p> <p><a href="http://www.usbr.gov/mp/cao/pcwa/docs/faq.pdf">http://www.usbr.gov/mp/cao/pcwa/docs/faq.pdf</a></p>

<http://www.bbinfrastructureinc.com/projects/water/freeport.htm>



185 MGD

FREEPORT REGIONAL WATER PROJECT WATER INTAKE FACILITY ON THE SACRAMENTO RIVER

<http://www.bbinfrastructureinc.com/projects/water/freeport.htm>



250 cfs

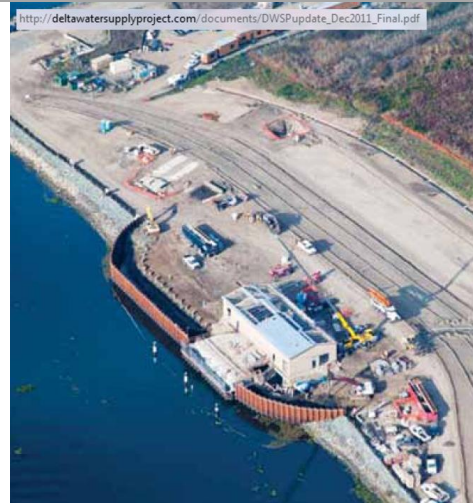
CCWD Alternative Intake Project on Victoria Canal

<http://www.ccwater.com/aip.asp>

[http://www.waterrights.ca.gov/application/PetNot/docs/20245\\_aip\\_ccwd\\_petition.pdf](http://www.waterrights.ca.gov/application/PetNot/docs/20245_aip_ccwd_petition.pdf)

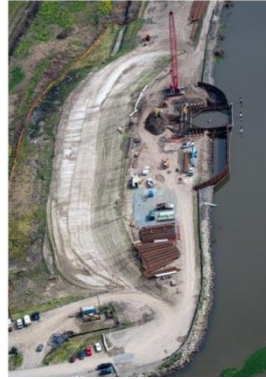
<http://www.reedconstructiondata.com/building-types/water-treatment/california/projects/1000821853/>

Los Vaqueros Reservoir has been raised and this new intake provides new surface storage water for CCWD



160 MGD  
WITH  
EXPANSION

DELTA WATER SUPPLY PROJECT (CITY OF STOCTON CONJUNCTIVE USE) Empire Tract  
(Note that this location is the same spot shown in the DRMS Phase 2 central conveyance plans for locating a water siphon and tunnel under the San Joaquin River)



<http://deltawatersupplyproject.com/>

[http://deltawatersupplyproject.com/documents/DWSP\\_Update\\_Jan2012\\_Final.pdf](http://deltawatersupplyproject.com/documents/DWSP_Update_Jan2012_Final.pdf)

<http://www.adorfson.com/projects/stockton-delta-water-supply-project>

100 TO 225  
CFS

AMERICAN RIVER PUMP STATION PROJECT. 2010 contract award  
Renamed Placer County Water Agency Pump Station Project

<http://www.usbr.gov/mp/cao/pcwa/docs/faq.pdf>

<http://www.whpacific.com/pages/Portfolio/Project.aspx?ProjectID=13>

100 MGD

FOLSOM SOUTH CANAL CONNECTION

<http://www.bbinfrastructureinc.com/projects/water/folsom.htm>

185 mgd or 203,5000 AFY

page with links to the main documents

145,000 cfs to 160,000 cfs in flood times, 200 mgd all other times? Not Clear

[http://www.parkerdesign.info/AR\\_site/html/folsom\\_dam\\_mods/increase\\_floodwater.html](http://www.parkerdesign.info/AR_site/html/folsom_dam_mods/increase_floodwater.html)

See Sankey docs below

210 CFS

ELKHORN DIVERSION ON THE SACRAMENTO RIVER

420 CFS

SANKEY DIVERSION ON THE SACRAMENTO RIVER

[http://www.cpuc.ca.gov/Environment/info/esa/gswc\\_sp/pdf/GSWC\\_SutterPointe\\_NOP.pdf](http://www.cpuc.ca.gov/Environment/info/esa/gswc_sp/pdf/GSWC_SutterPointe_NOP.pdf)

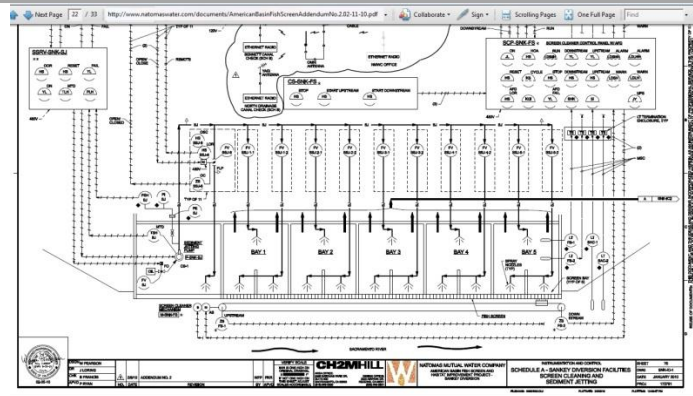


GSWC - Sutter Pointe CPON EIR, 207584  
Figure 2  
Proposed Facility Layout

365 cfs

American Basin Fish Screen and Habitat Improvement Project Along Garden Highway by Verona

<http://www.natomaswater.com/FishScreenProject.asp>  
[http://www.usbr.gov/mp/nepa/documentShow.cfm?Doc\\_ID=3301](http://www.usbr.gov/mp/nepa/documentShow.cfm?Doc_ID=3301)


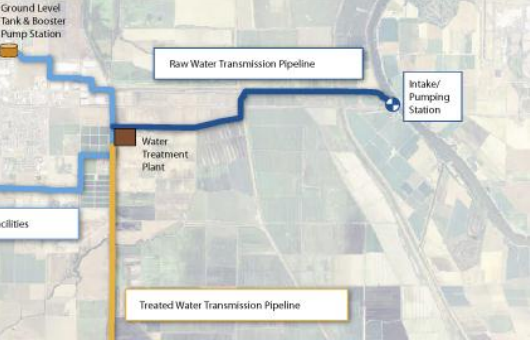


<http://rd108.org/project-spotlight>

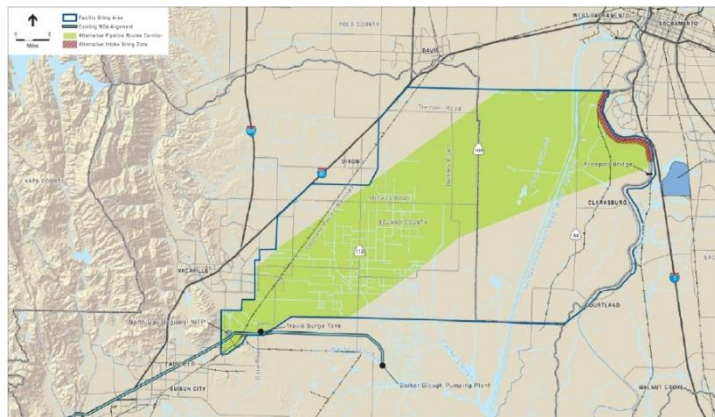


EMERY POUNDSTONE PUMPING PLANT FOR RD 108 (may be part of the projects for RD 108)



<p>Reclamation District 108 Wilkins Slough</p> 	<p>830 CFS</p>	<p>WILKINS SLOUGH PUMPING PLANT FOR RD 108  <a href="http://rd108.org/project-spotlight/fishscreen-program">http://rd108.org/project-spotlight/fishscreen-program</a> appears to represent a substantial, at least 50%, increase in water diversion rights or permits.</p>
<p>South Steiner Pumps to be dismantled when Wilkins Slough Pumping Plant becomes operational</p>		<p>SOUTH STEINER PUMPS AND PIPELINE  <a href="http://rd108.org/images/stories/south%20steiner%20pumps%20and%20pipeline%20draft%20eais_09-28-11.pdf">http://rd108.org/images/stories/south%20steiner%20pumps%20and%20pipeline%20draft%20eais_09-28-11.pdf</a></p>
	<p>460 CFS</p>	<p>WOODLAND/DAVIS NEW SACRAMENTO RIVER INTAKE (DWWSP)  <a href="http://www.wdcwa.com/the_project">http://www.wdcwa.com/the_project</a>  <a href="http://cityofdavis.org/pw/water/pdfs/2011.11-DWWSP-Alternatives-Summary-Memo.pdf">http://cityofdavis.org/pw/water/pdfs/2011.11-DWWSP-Alternatives-Summary-Memo.pdf</a>  <a href="http://ice.ucdavis.edu/education/esp179/?q=node/185">http://ice.ucdavis.edu/education/esp179/?q=node/185</a>  <a href="http://www.cityofwoodland.org/civica/filebank/blobload.asp?BlobID=4832">http://www.cityofwoodland.org/civica/filebank/blobload.asp?BlobID=4832</a>  <a href="http://www.dcn.davis.ca.us/dcn/projects/conjunctiveuse/chapt2.html">http://www.dcn.davis.ca.us/dcn/projects/conjunctiveuse/chapt2.html</a>  <a href="http://davismerchants.org/water/Summaryofwateralternatives.pdf">http://davismerchants.org/water/Summaryofwateralternatives.pdf</a></p>

### Proposed Facilities



240 cfs plus expansion and conjunctive use not yet defined

NBA NEW SACRAMENTO RIVER INTAKE (PROPOSED) or the SOLANO COUNTY ALTERNATE INTAKE PROJECT and/OR EXPANSION OF Bryte Bend Water Treatment Plant

<http://www.water.ca.gov/engineering/Projects/Current/NBA/>

<http://www.scwa2.com/Documents/IRWMP/IRWMP%20Section%205.pdf>

<http://www.scwa2.com/Documents/IRWMP/FINAL%20APPENDIX%20A.pdf>

<http://www.water.ca.gov/engineering/docs/NBA%20AIP%20Scoping%20meetings%20Powerpoint%20Presentations.pdf>

162 / 281 [http://www.waterboards.ca.gov/waterrights/water\\_issues/programs/bay\\_delta/wq\\_control\\_plans/2006wqcp/exhibits/append2/swrcb/swrcb-17.pdf](http://www.waterboards.ca.gov/waterrights/water_issues/programs/bay_delta/wq_control_plans/2006wqcp/exhibits/append2/swrcb/swrcb-17.pdf)



Figure 4-17 Potential Location of Solano County Water Agency Alternative Intake

[http://www.bbinfrastructureinc.com/projects/water/red\\_bluff.htm](http://www.bbinfrastructureinc.com/projects/water/red_bluff.htm)



2100 cfs

Redbluff Pumping Station and Fish Screen

[http://www.bbinfrastructureinc.com/projects/water/red\\_bluff.htm](http://www.bbinfrastructureinc.com/projects/water/red_bluff.htm)

NODOS means north of Delta offsite storage. Perhaps this particular huge diversion and fish screen will be filling off-river storage like the proposed Sites project?

More links

[http://www.usbr.gov/mp/ccaodocs/auburn\\_rpt/Appendix%20A/March%202006%20Project%20Description.pdf](http://www.usbr.gov/mp/ccaodocs/auburn_rpt/Appendix%20A/March%202006%20Project%20Description.pdf)

[http://www.usbr.gov/mp/ccaodocs/auburn\\_rpt/12-06%20final.pdf](http://www.usbr.gov/mp/ccaodocs/auburn_rpt/12-06%20final.pdf)

[http://www.usbr.gov/mp/ccaodocs/auburn\\_rpt/Appendix%20A/March%202006%20Project%20Description.pdf](http://www.usbr.gov/mp/ccaodocs/auburn_rpt/Appendix%20A/March%202006%20Project%20Description.pdf)

[http://www.usbr.gov/mp/ccaodocs/auburn\\_rpt/](http://www.usbr.gov/mp/ccaodocs/auburn_rpt/)

[http://www.parkerdesign.info/AR\\_site/html/folsom\\_dam\\_mods/increase\\_floodwater.html](http://www.parkerdesign.info/AR_site/html/folsom_dam_mods/increase_floodwater.html)

[http://www.parkerdesign.info/AR\\_site/html/common\\_features/cf\\_map.html](http://www.parkerdesign.info/AR_site/html/common_features/cf_map.html)

<http://www.srco.com/Bridges/Folsom-South-Canal.html>

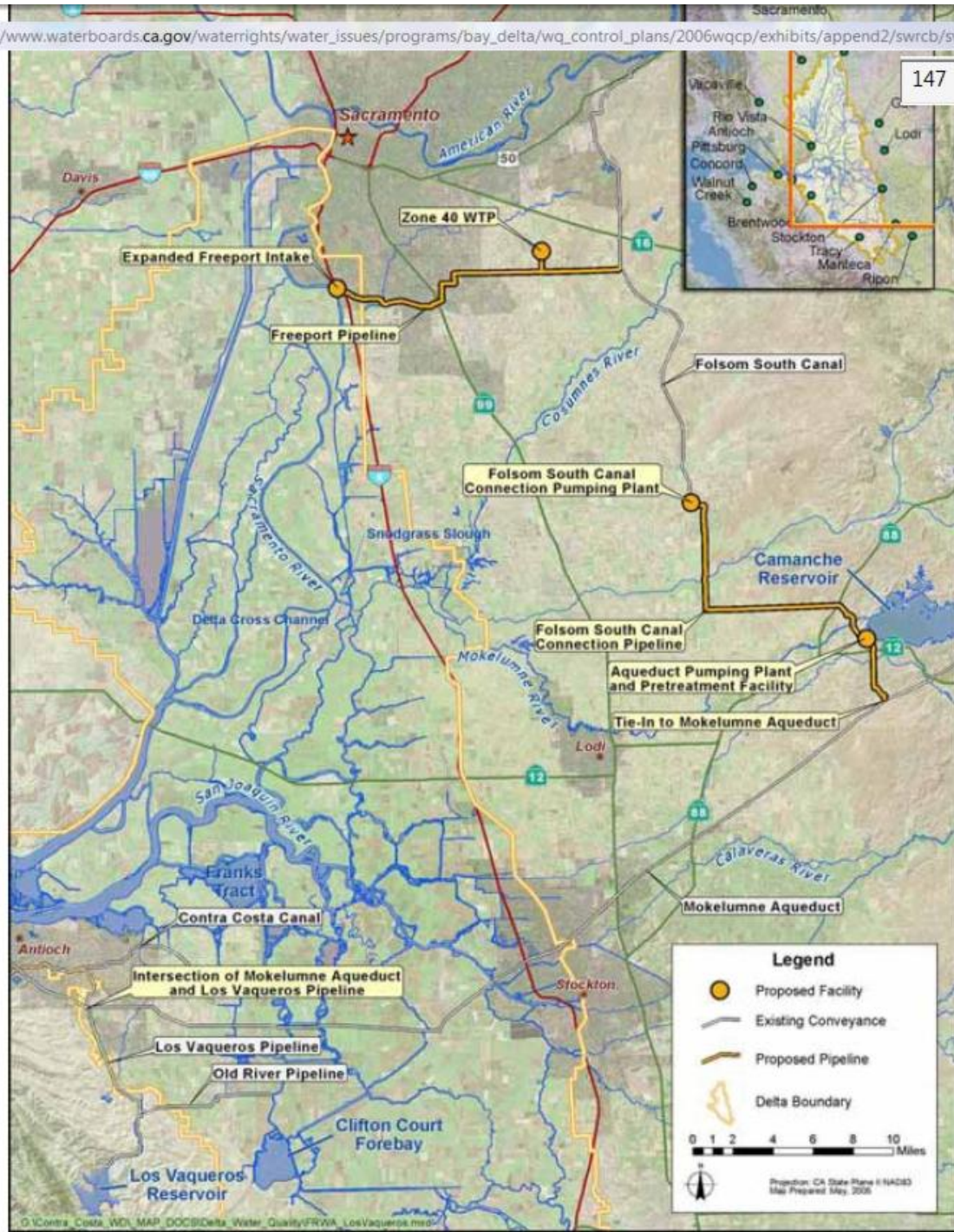
<http://www.bbinfrastructureinc.com/docs/FolsomSouthCanalConnectionProject07-07.pdf>

[http://www.rwah2o.org/rwa/files/irwmp\\_sec7\\_impactsbenefits\\_june06.pdf](http://www.rwah2o.org/rwa/files/irwmp_sec7_impactsbenefits_june06.pdf)

<http://www.safca.org/documents/Mayhew/Final%20Broken%20Down/Appendix%20E.pdf>

<http://www.spk.usace.army.mil/projects/civil/natomascertification/natomasmastermap.pdf>





A look at how the Folsom South Canal will be used to convey Sacramento River water around the North Delta and into the Mokelumne Aquaduct System.

Figure 1 Folsom South Canal Use to convey water around the Delta

More links next page:

Figure 4-9 Freeport Regional Water Authority Project and Intertie with Los Vaqueros Pipeline