

Through-Delta Facility & Delta Cross-Channel Projects

Status Update
Planned Activities

Sean Bagheban

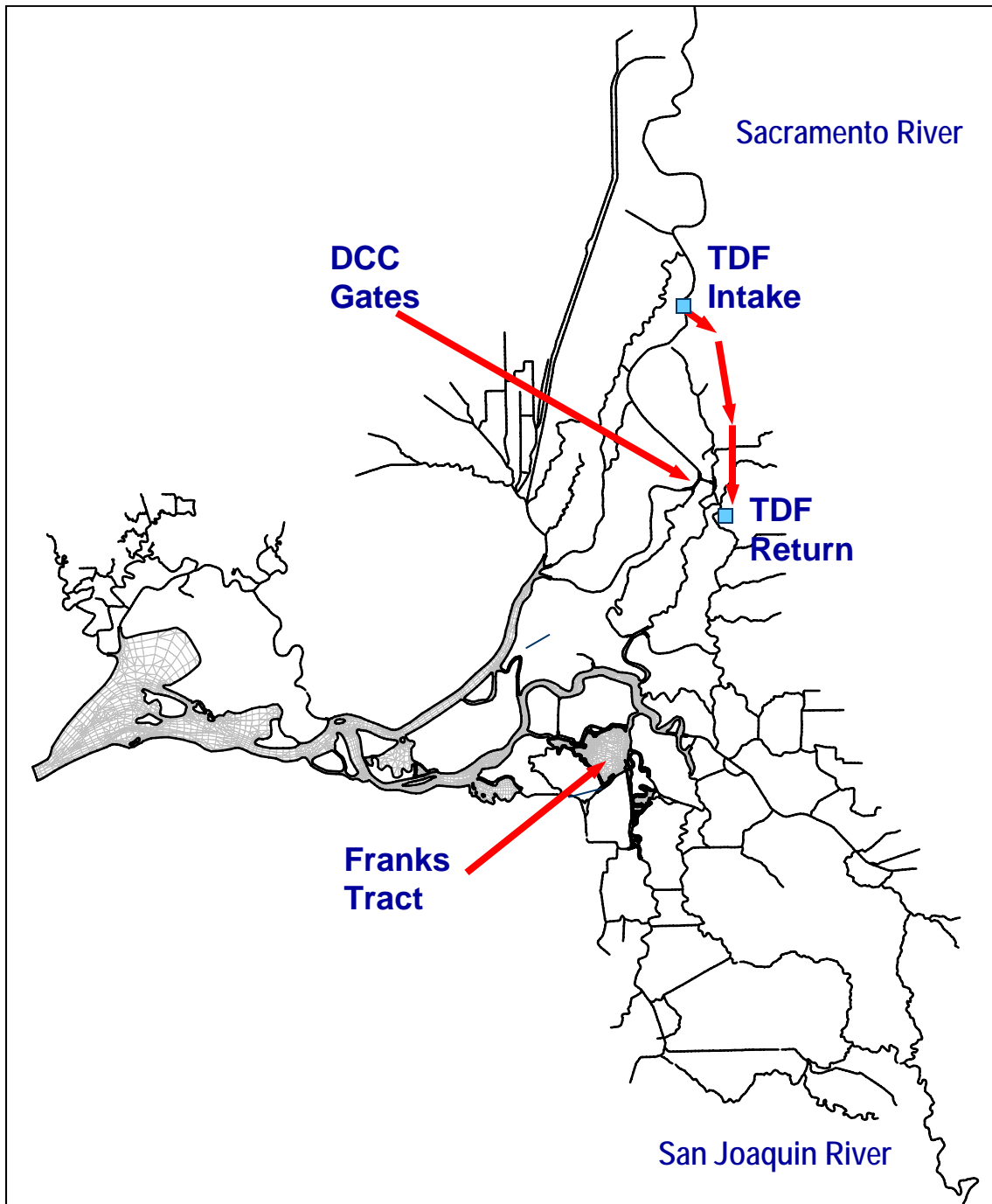


Why a TDF/DCC Project?

- August 2000 CALFED Record of Decision
 - Evaluation of the technical viability of a 4,000 cfs diversion facility (TDF)
 - Analysis of DCC operation strategies and alternatives to alleviate water quality impacts from DCC operations
 - Satisfactory resolution of the fisheries concerns

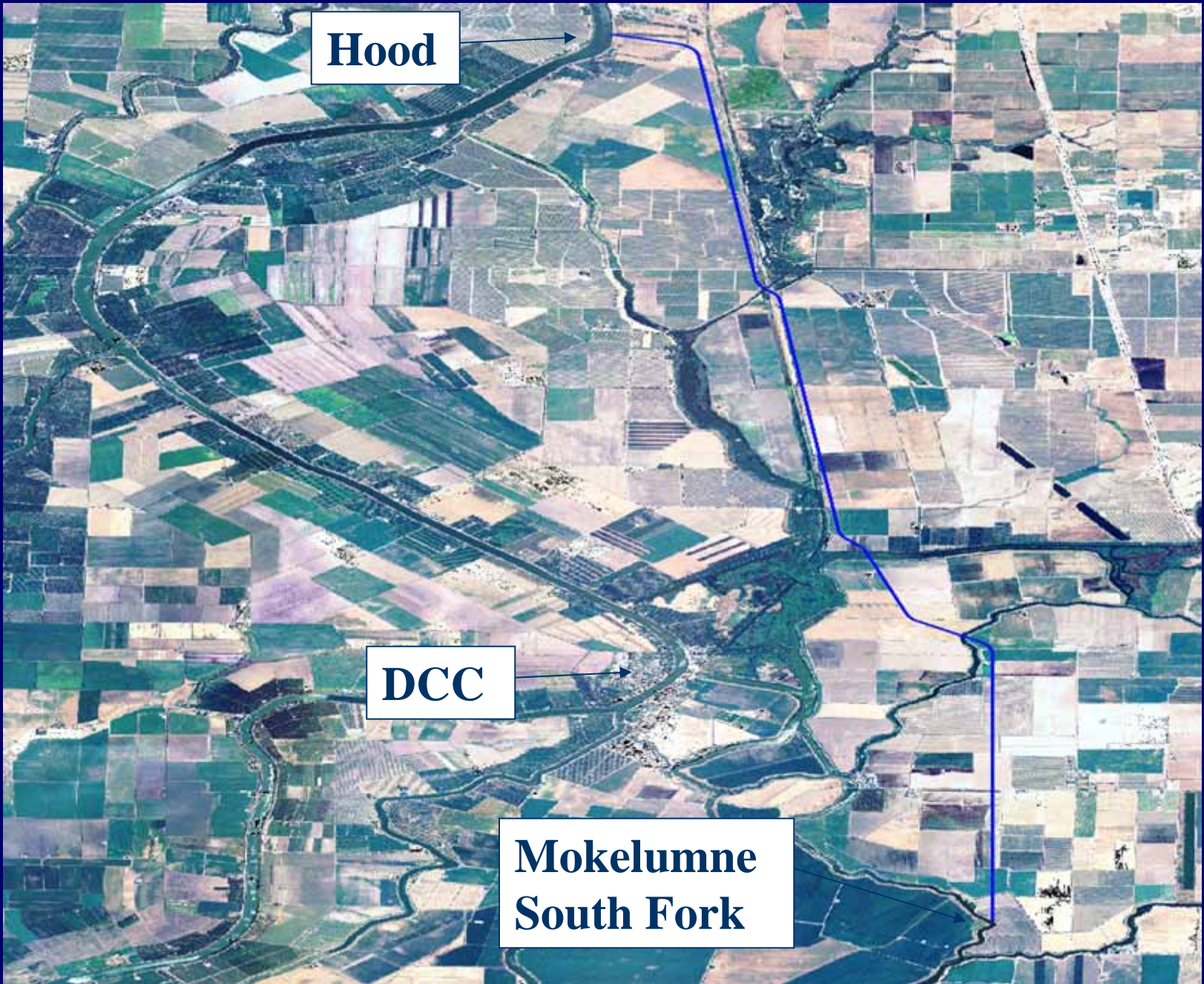
Status of the TDF/DCC Projects

- Hydrodynamics / Water Quality Modeling by RMA
- 2006 & 2007 USGS Experiments
- TDF Alignment / Surveying / Engineering / Cost Estimate by DOE
- Partnership with USBR for fishery issues
- Summary Report → Fall 2007
- Final Report → Fall 2008



Through Delta Facility Configuration

- 4,000 cfs Sacramento River diversion near Hood
- Returns to South Fork Mokelumne at New Hope Tract



Hood

DCC

**Mokelumne
South Fork**

Sacramento River & DCC



DCC Gates



Delta Cross Channel /Through Delta Facility

What we've learned to date

- Water quality modeling results show potential for significant reduction in salinity
- Field studies show:
 - DDC operations have regional impact
 - Circulation patterns at bends in rivers affect fish behavior
 - Fish move in the water column due to day and night conditions
 - Reconfiguration of slough entrances may reduce fish entrainment

Delta Cross Channel/ Through Delta Facility Summary of Salinity (EC) Reduction

	SWP	CVP	CCWD Old River	CCWD Rock Slough
TDF Sep 2002 (Dry)	26%	22%	27%	25%
TDF/FT Sep 2002 (Dry)	32%	26%	36%	35%
DCC Tidal Dec 1999 (Wet)*	7%	4%	10%	9%
DCC Dawn-Dusk Dec 1999 (Wet)*	13%	7%	19%	16%

* DCC closed thru Dec 14

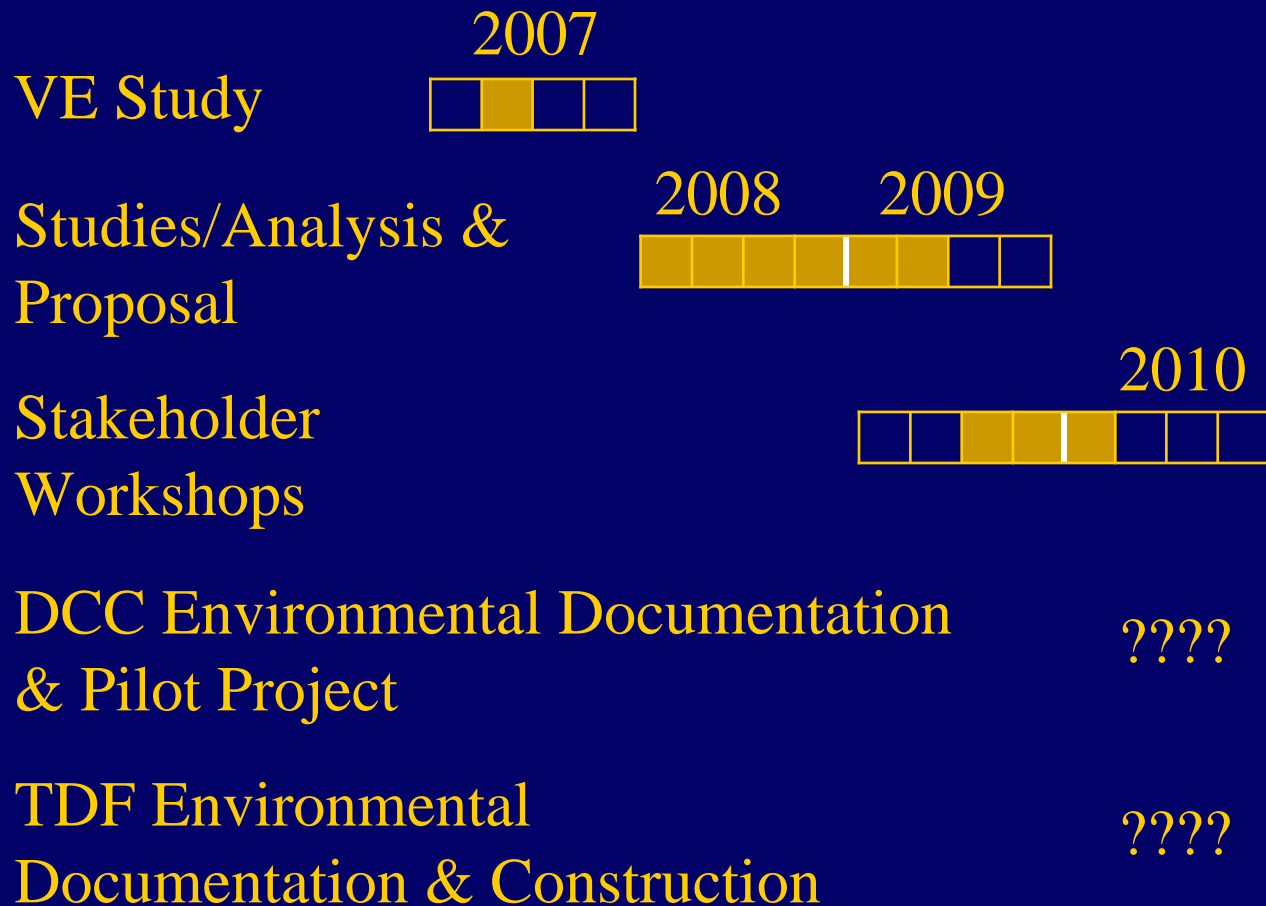
Results Summary

- The TDF with historical DCC operation provided 20-30% salinity reduction
- TDF raises EC for the Sacramento River at Emmaton and Rio Vista
 - important in critically dry years
- DCC re-operation alone may provide salinity reduction of up to 20%
 - depending on water year and re-operation scenario

Delta Cross Channel/Through Delta Facility Work Plan

- Continue water quality modeling
- Determine fishery impacts/benefits
- Propose alternatives
- Refine project alternatives
 - TDF construction
 - DCC re-operation
 - Both

Delta Cross Channel/Through Delta Facility Project Schedule



Questions

Sean Bagheban

(916) 653-9444

seanb@water.ca.gov