

RECLAMATION

Managing Water in the West

CVP/SWP OCAP and Biological Assessment Public Information Meeting

December 6, 2004

2 p.m. – 4 p.m.



U.S. Department of the Interior
Bureau of Reclamation

Meeting Agenda

- **Welcome & Introduction**
- **Recap October 7, 2004 Public Information Meeting**
- **Follow-up on Comments from last Meeting**
- **Open Discussion**

Meeting Agenda Oct 7th

- **OCAP & ESA Consultation**
- **Biological Assessment**
- **Related Public Processes**

Operations Criteria and Plan (OCAP) Purpose

- Documents CVP operations
- Provides basis for BA project description
 - Developed in 1992 for the winter-run Chinook salmon BA
- Documents changes since 1992

OCAP Document

- Not a NEPA/CEQA decision document
- Provides detailed project description of CVP/SWP
- Explains regulatory and legal requirements
- Includes project operations constraints and objectives
- Presents historic modeling (1991 to present)
- Explains forecasting process

Biological Assessment

- Consultation information document
- Not a NEPA/CEQA decision document
- Identification of existing and potential actions
- Analyses of effects on listed species from CVP/SWP operations

Reason for Consultation

- **CVP/SWP operations affect listed species**
 - Primarily coho salmon, winter-run and spring-run Chinook salmon, steelhead, and Delta smelt
- **Long-Term BOs date from 1993 & 1995**
- **Interim BO on spring-run/steelhead**

ESA Consultation Chronology

- **2002 – decision to do a comprehensive ESA consultation**
- **June 16, 2003 – public information meeting, draft documents available**
- **November 25, 2003 – public information meeting & status for BA, SDIP, EWA & other CALFED activities**
- **February 2004 – BA modeling posted**

ESA Consultation Chronology

- Informal consultation – Feb 13, 2004
- Initiate consultation – March 15, 2004
- Public release of BA – March 22, 2004
- Public release of revised OCAP & BA – June 30, 2004
- Received FWS BO July 30, 2004
- Received NOAA Fisheries BO Oct 22, 2004

Follow up on comments from last meeting

- **Formal and Early Consultation activities**
- **Sacramento River Temperature Control**
- **American River Issues**
- **Other items**

Related Public Processes

Formal Consultation

Action	Public Process	Status
On-going CVP/SWP Operations	CALFED Ops Group	On-going
Water Transfers	NEPA/CEQA & SWRCB Approval	As needed
Joint Point of Diversion	CEQA & SWRCB Approval	Completed EIR
EWA (through 2007)	NEPA/CEQA	Completed EIR/S 2004
New Projects		
Trinity River Flows	NEPA/CEQA	Completed EIR/S 2000 ROD
Freeport Diversion	NEPA/CEQA	Completed EIR/S April 2004, ROD pending
DMC/CA Intertie	NEPA/CEQA	Draft EA/IS was released Nov 29, 2004

Related Public Processes

Formal Consultation

Action	Public Process	Status
On-going CVP/SWP Operations Water Transfers Joint Point of Diversion EWA (through 2007)	CALFED Ops Group NEPA/CEQA & SWRCB Approval CEQA & SWRCB Approval NEPA/CEQA	On-going As needed Completed EIR Completed EIR/S 2004
New Projects Trinity River Flows Freeport Diversion DMC/CA Intertie	NEPA/CEQA NEPA/CEQA NEPA/CEQA	Completed EIR/S 2000 ROD Completed EIR/S April 2004, ROD pending Draft EA/IS was released Nov 29, 2004

On-going CVP/SWP Operations

- **Water right permits, existing pumping capabilities**
 - **CCFB intake at 6680 cfs**
 - but can be higher from mid-Dec – mid-Mar
 - **Tracy Pumping at 4600 cfs**

On-going CVP/SWP Operations

- Water right permits, existing pumping capabilities, and environmental programs
 - CVPIA

On-going CVP/SWP Operations

- **CVP/SWP coordinated operations**
 - **Coordinated Operations Agreement**
 - **CALFED Ops Group Process**
 - **Data Assessment Team**
 - **Operations and Fisheries Forum**
 - **B2IT**
 - **EWA Team**
 - **Water Operations Management Team**

Related Public Processes

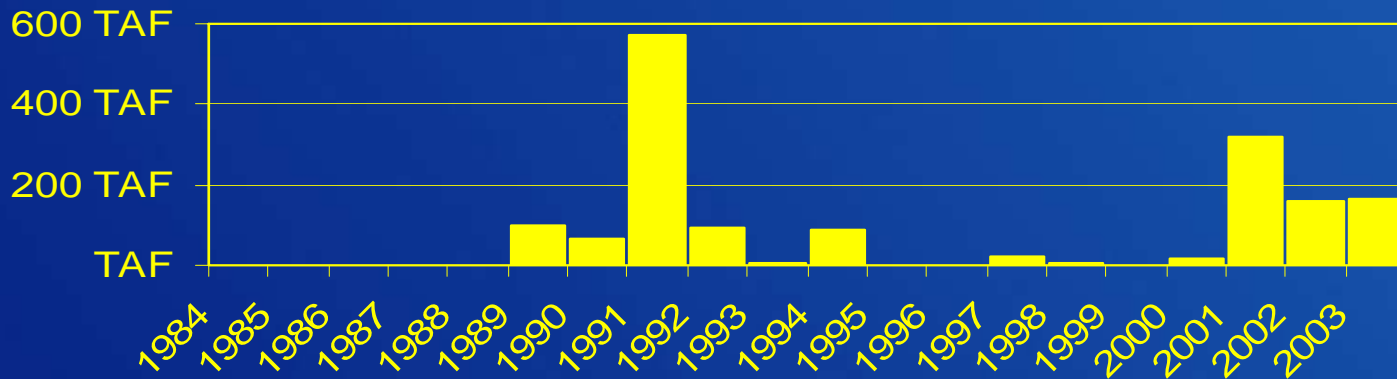
Formal Consultation

Action	Public Process	Status
On-going CVP/SWP Operations	CALFED Ops Group	On-going
Water Transfers	NEPA/CEQA & SWRCB Approval	As needed
Joint Point of Diversion	CEQA & SWRCB Approval	Completed EIR
EWA (through 2007)	NEPA/CEQA	Completed EIR/S 2004
New Projects		
Trinity River Flows	NEPA/CEQA	Completed EIR/S 2000 ROD
Freeport Diversion	NEPA/CEQA	Completed EIR/S April 2004, ROD pending
DMC/CA Intertie	NEPA/CEQA	Draft EA/IS was released Nov 29, 2004

On-going CVP/SWP Operations

- **Water transfers**
 - **60 – 460 TAF per year in 80% of years; up to 1 MAF in driest 20% of years.**
 - **Most transfers occur July through September.**

Water Transfers through SWP



Related Public Processes

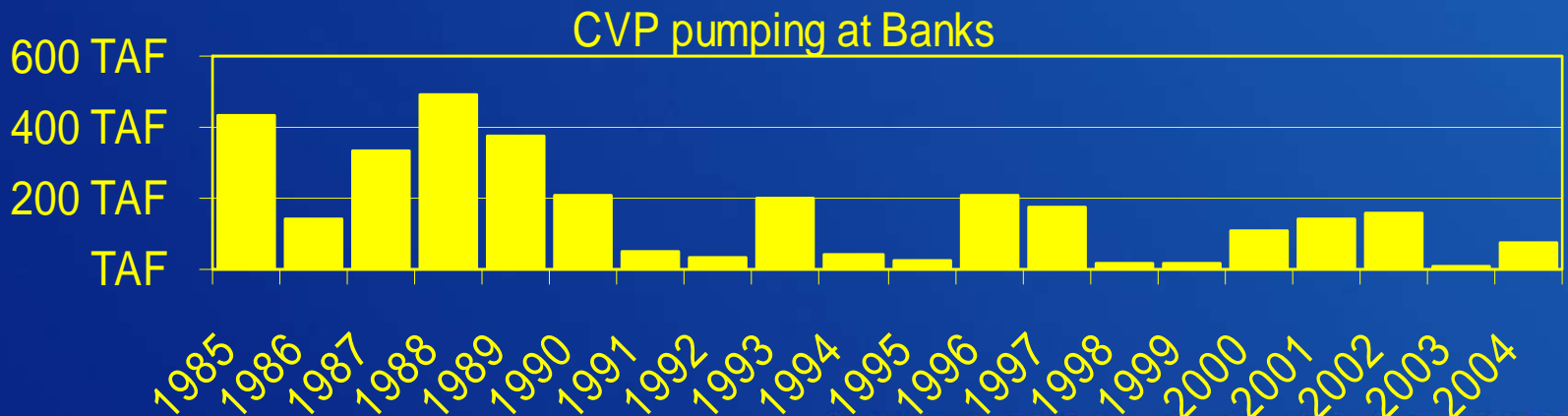
Formal Consultation

Action	Public Process	Status
On-going CVP/SWP Operations	CALFED Ops Group	On-going
Water Transfers	NEPA/CEQA & SWRCB Approval	As needed
Joint Point of Diversion	CEQA & SWRCB Approval	Completed EIR
EWA (through 2007)	NEPA/CEQA	Completed EIR/S 2004
New Projects		
Trinity River Flows	NEPA/CEQA	Completed EIR/S 2000 ROD
Freeport Diversion	NEPA/CEQA	Completed EIR/S April 2004, ROD pending
DMC/CA Intertie	NEPA/CEQA	Draft EA/IS was released Nov 29, 2004

On-going CVP/SWP Operations

- **Joint Point of Diversion**

- **Mostly CVP use of Banks Pumping Plant**
- **Uses include CVC, Refuge deliveries, CVP yield augmentation, outages**
- **Amounts vary with availability of capacity at Banks PP. Typically July through October.**



Related Public Processes

Formal Consultation

Action	Public Process	Status
On-going CVP/SWP Operations	CALFED Ops Group	On-going
Water Transfers	NEPA/CEQA & SWRCB Approval	As needed
Joint Point of Diversion	CEQA & SWRCB Approval	Completed EIR
EWA (through 2007)	NEPA/CEQA	Completed EIR/S 2004
New Projects		
Trinity River Flows	NEPA/CEQA	Completed EIR/S 2000 ROD
Freeport Diversion	NEPA/CEQA	Completed EIR/S April 2004, ROD pending
DMC/CA Intertie	NEPA/CEQA	Draft EA/IS was released Nov 29, 2004

On-going CVP/SWP Operations

- **Environmental Water Account**
 - Purchase 200-240 TAF per year
 - Use extra 500 cfs in summer
 - Flex E/I ratio
 - 200 TAF of “stored” water
 - Portion of AFRP releases when not used by CVP
 - Use excess capacity
 - Source shifting (bridge loan)

Related Public Processes

Formal Consultation

Action	Public Process	Status
On-going CVP/SWP Operations	CALFED Ops Group	On-going
Water Transfers	NEPA/CEQA & SWRCB Approval	As needed
Joint Point of Diversion	CEQA & SWRCB Approval	Completed EIR
EWA (through 2007)	NEPA/CEQA	Completed EIR/S 2004
New Projects		
Trinity River Flows	NEPA/CEQA	Completed EIR/S 2000 ROD
Freeport Diversion	NEPA/CEQA	Completed EIR/S April 2004, ROD pending
DMC/CA Intertie	NEPA/CEQA	Draft EA/IS was released Nov 29, 2004

Related Public Processes

Early Consultation (cont)

Action	Public Process	Status
<p>Intermediate Integrated Operations</p> <p>JPOD for 50 TAF of CVP Wheeling</p> <p>CVP to cover 37.5 TAF additional inbasin demands</p> <p>Source shifting agreements to bolster San Luis storage</p>	<p>NEPA/CEQA</p>	<p>EA/IS to be completed 2005</p>
<p>Use of Shasta storage</p>	<p>NEPA/CEQA</p>	<p>TBD</p>
<p>Long-Term EWA</p>	<p>NEPA/CEQA</p>	<p>EIR/S to be completed</p>

Related Public Processes

Early Consultation (cont)

Action	Public Process	Status
<p>Intermediate Integrated Operations</p> <p>JPOD for 50 TAF of CVP Wheeling</p> <p>CVP to cover 37.5 TAF additional inbasin demands</p> <p>Source shifting agreements to bolster San Luis storage</p>	<p>NEPA/CEQA</p>	<p>EA/IS to be completed 2005</p>
<p>Use of Shasta storage</p>	<p>NEPA/CEQA</p>	<p>TBD</p>
<p>Long-Term EWA</p>	<p>NEPA/CEQA</p>	<p>EIR/S to be completed</p>

Shasta storage borrowing is not about...

- Raising Shasta Dam
- Water transfer from CVP to SWP
- To happen any time soon.
 - (Only 2 out 73 years would the opportunity arise)

Related Public Processes

Early Consultation (cont)

Action	Public Process	Status
<p>Intermediate Integrated Operations</p> <p>JPOD for 50 TAF of CVP Wheeling</p> <p>CVP to cover 37.5 TAF additional inbasin demands</p> <p>Source shifting agreements to bolster San Luis storage</p>	<p>NEPA/CEQA</p>	<p>EA/IS to be completed 2005</p>
<p>Use of Shasta storage</p>	<p>NEPA/CEQA</p>	<p>TBD</p>
<p>Long-Term EWA</p>	<p>NEPA/CEQA</p>	<p>EIR/S to be completed</p>

Long-term EWA

- Same amount of fixed assets (200-240)
- 90 TAF of conveyance during summer
- Same costs in fall and early winter
- Higher costs during spring
- Greater change of spilling debt

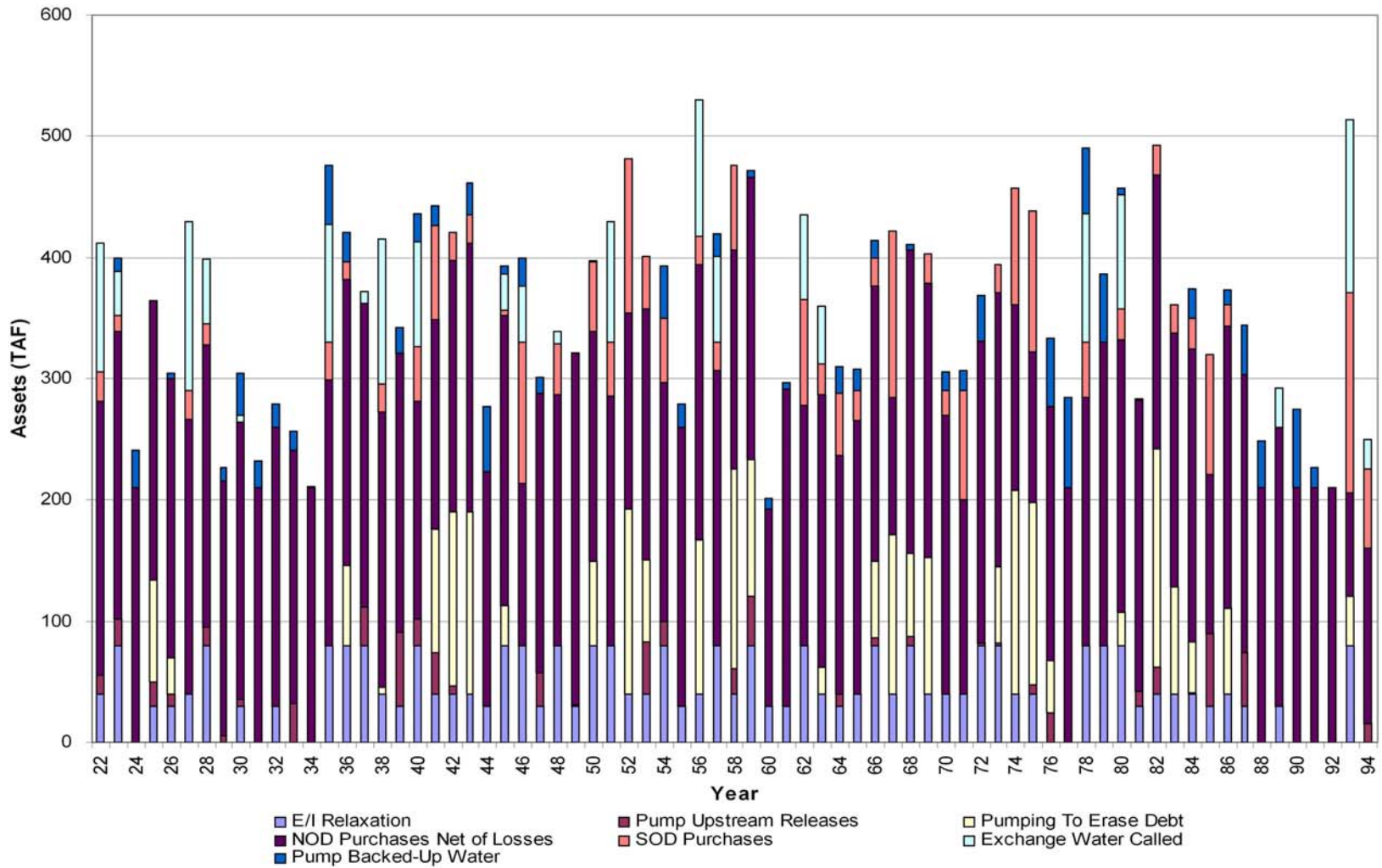


Figure 8-17 EWA Assets by Water Year

Related Public Processes

Early Consultation

Action	Public Process	Status
South Delta Improvement Program 8500 cfs at Banks Pumping Plant Permanent Barrier Operations Wheel 100 TAF of refuge water for CVP Shift up to 75 TAF of inbasin demands to CVP	NEPA/CEQA	EIR/S to be completed 2005

Average Annual Banks Exports

6680 vs 8500

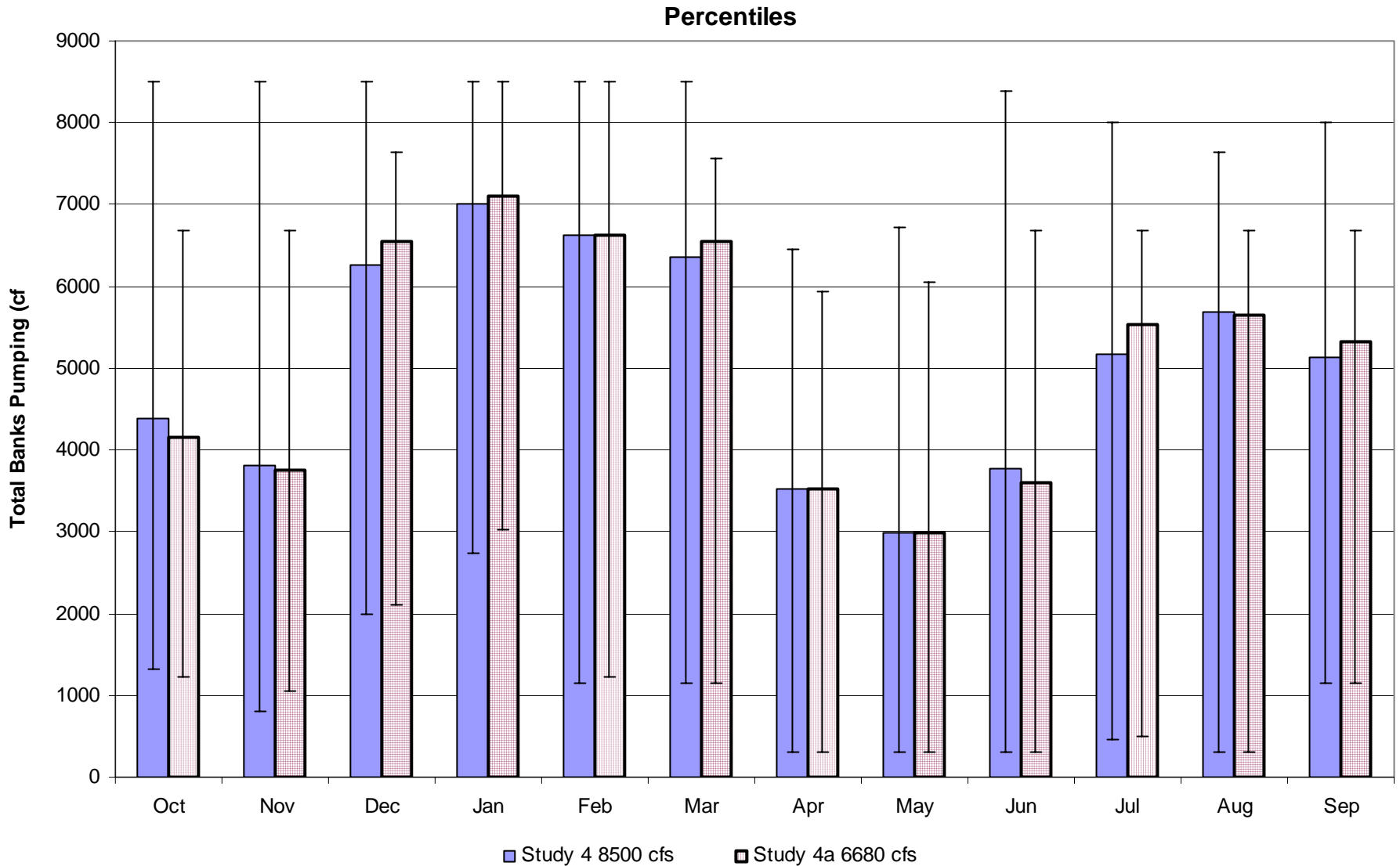
(no EWA Pumping)

	Study 4 8500 cfs	Study 4a 6680 cfs	Percent Difference
Average	3493	3371	3.6%
Wet	4440	4235	4.8%
Above Normal	4038	3941	2.5%
Below Normal	3768	3664	2.8%
Dry	2958	2864	3.3%
Critical	1616	1571	2.9%

RECLAMATION

Monthly Banks Pumping 6680 vs 8500

(Bars 50th whiskers 5th and 95th)



Operational Changes since Winter Run, NOAA B.O.1993

- **Implementation of CVPIA 3406 (b)(2)**
- **Implementation of SWRCB 1995 WQCP**
- **Implementation of Trinity River ROD**
- **Installation of Shasta TCD in 1997**
- **Improved fish passage at Red Bluff Diversion Dam and Anderson-Cottonwood I.D. Diversion Dam**

Reconsultations since 1993

Water Year	Starting Compliance Point	Reclamation letters	
		Date	Change in Compliance Point
1993	Bend Bridge		
1994	Jelly's Ferry		
1995	Bend Bridge	7/13/1995	Jelly's Ferry
1996	Bend Bridge	7/18/1996 8/28/1996 9/23/1996	Jelly's Ferry Ball's Ferry Clear Creek
1997	Bend Bridge	8/8/1997	Jelly's Ferry
1998	Bend Bridge	9/18/1998	Jelly's Ferry
1999	Bend Bridge		
2000	Bend Bridge	7/14/2000 8/29/2000	Jelly's Ferry Ball's Ferry
2001	Jelly's Ferry		
2002	Jellys' Ferry		
2003	Bend Bridge	8/28/2003	Ball's Ferry

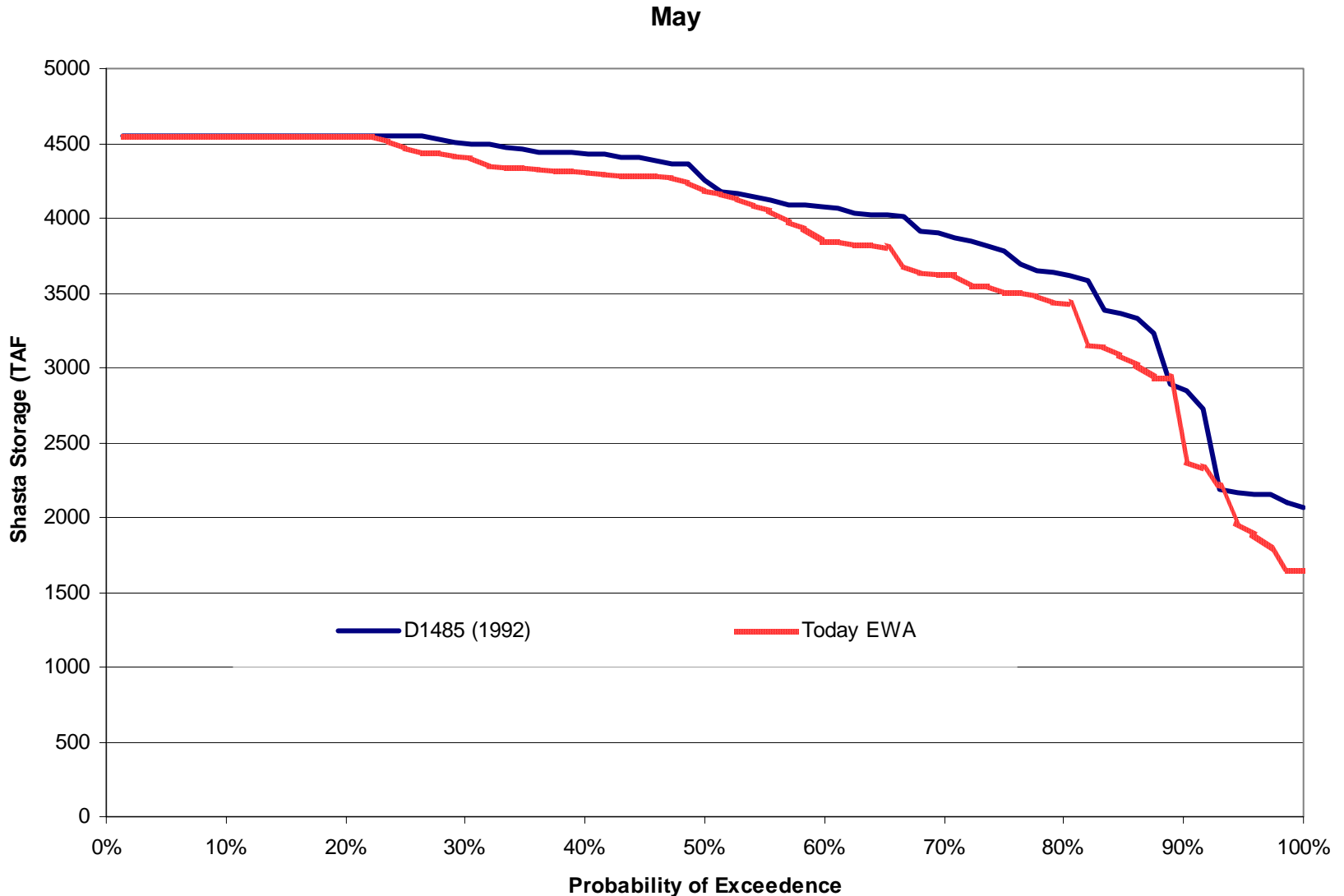
RECLAMATION

Sacramento River Temperature Control

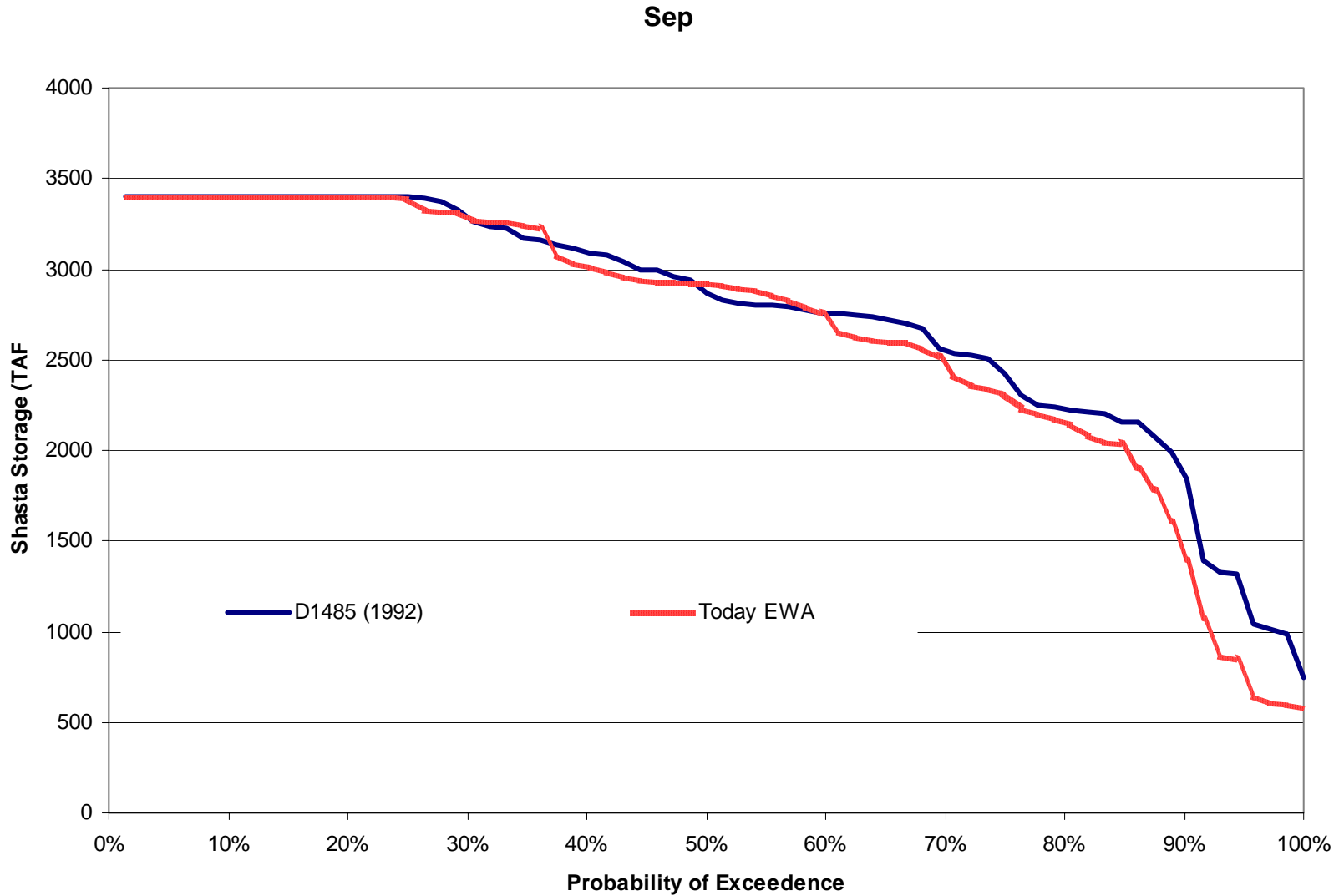
- **Less cold water available from Trinity River**
- **Winter run spawning distribution is mostly above Balls Ferry**
- **Proposed to move temperature target upstream to Balls Ferry**
- **Results in little change in effect on winter run spawning/incubation success, which is high survival**
- **Provides more efficient utilization of cold water under SWRCB 90-5 and 91-1**

RECLAMATION

Shasta End of May Storage from OCAP runs (1992/Today)

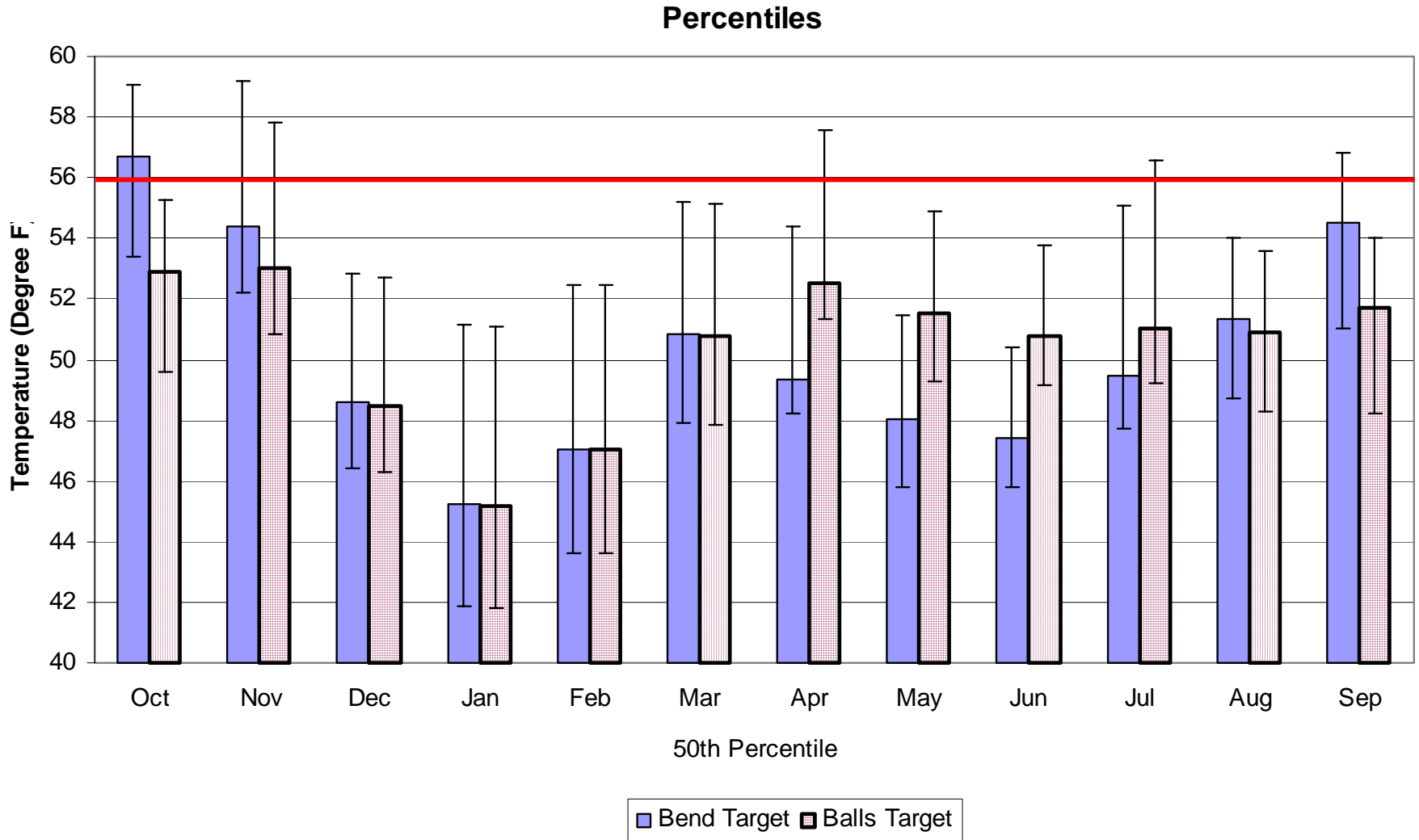


Shasta End of September from OCAP runs



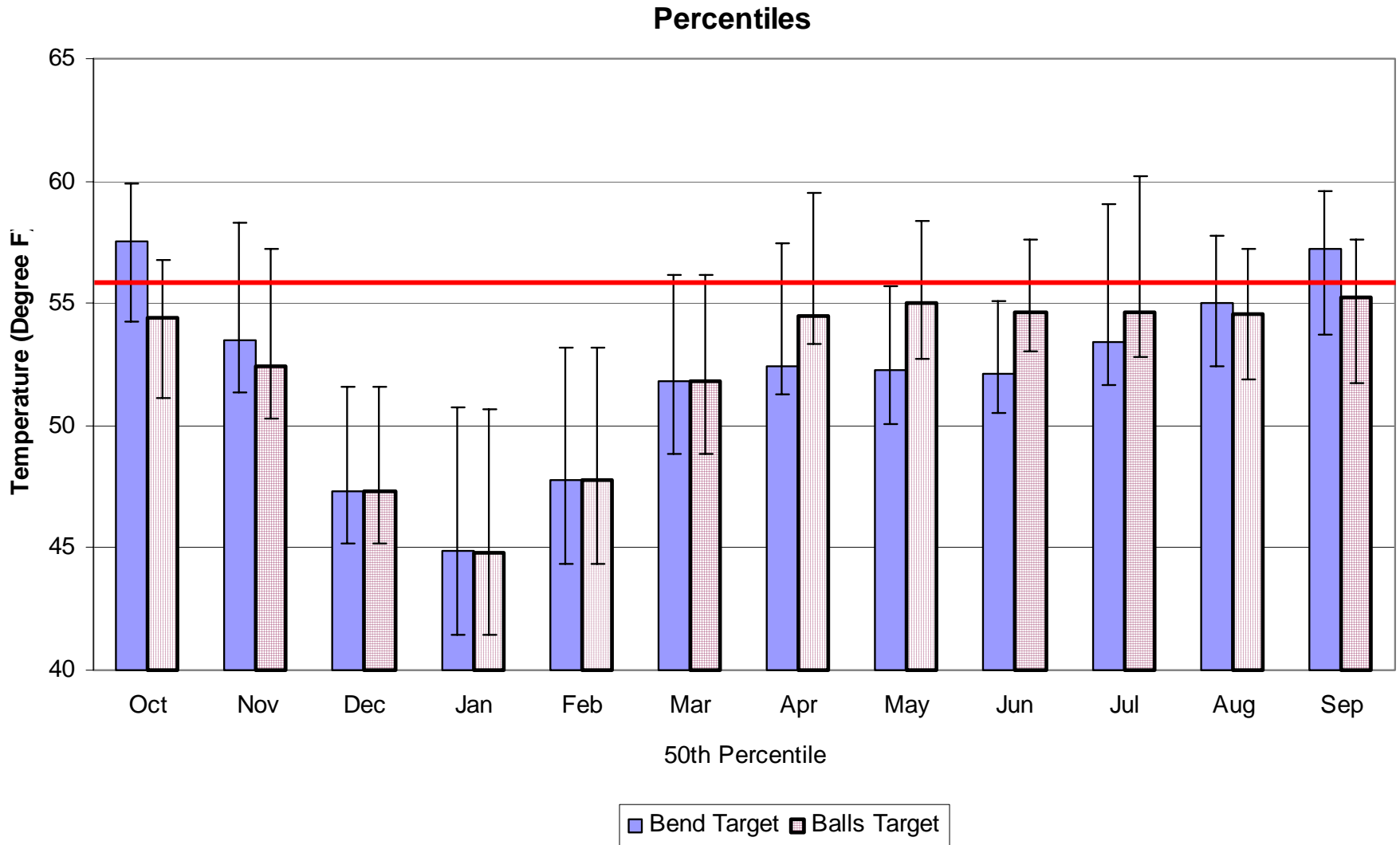
Monthly Temperature Percentiles at Keswick

(Bars 50th whiskers 5th and 95th)



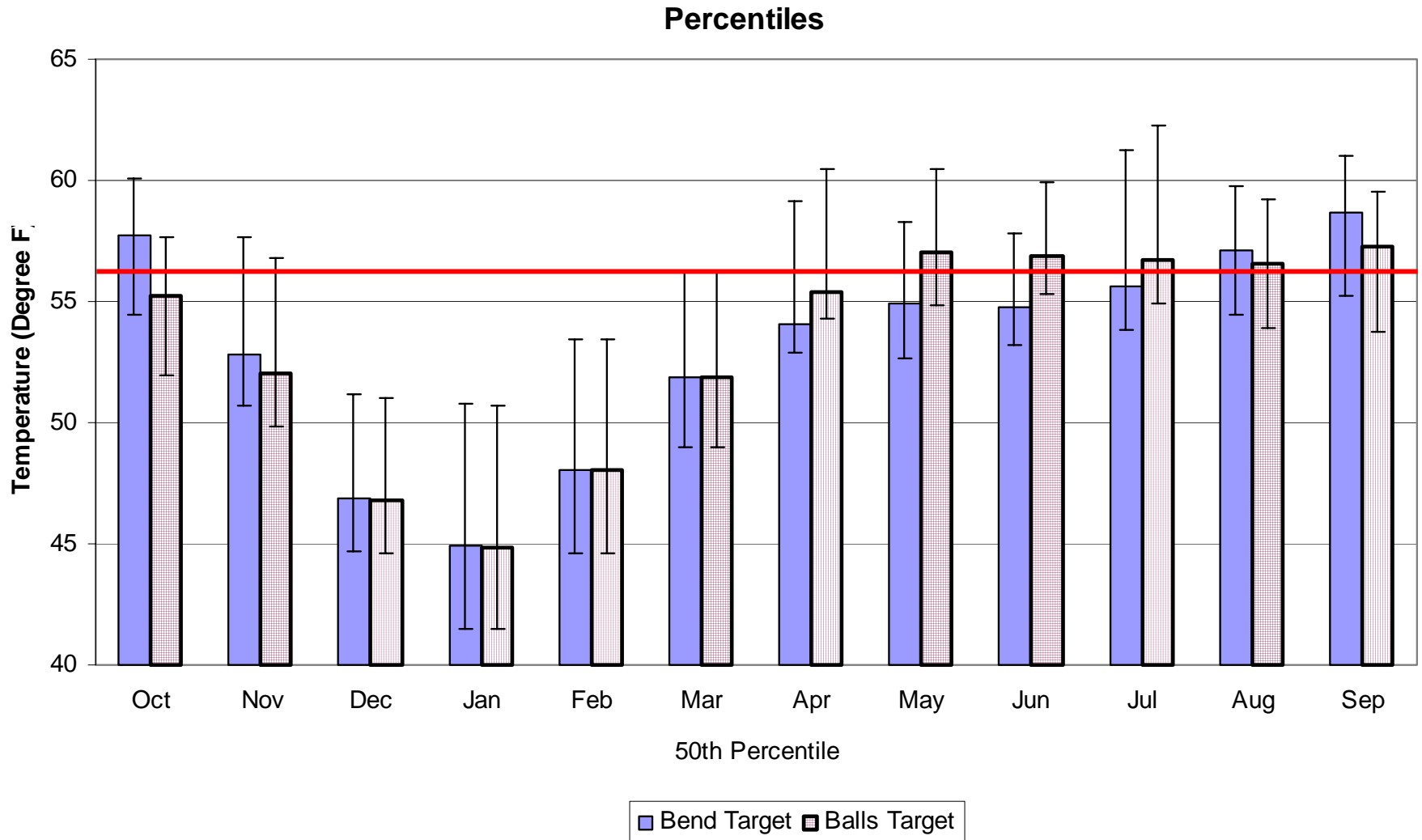
Monthly Temperature Percentiles at Balls Ferry

(Bars 50th whiskers 5th and 95th)



Monthly Temperature Percentiles at Bend Bridge

(Bars 50th whiskers 5th and 95th)



Red Bluff Diversion Dam

- **Gates in May 15 through September 15**
- **Small proportion of winter run, spring run, and steelhead populations encounter closed gates so need to use fish ladders**
 - **Winter run population increasing with current gate operations**
 - **Spring run are mostly in tribs downstream of RBDD, but the small proportion upstream are affected**
 - **Steelhead migrate mostly after gates are up**

American River

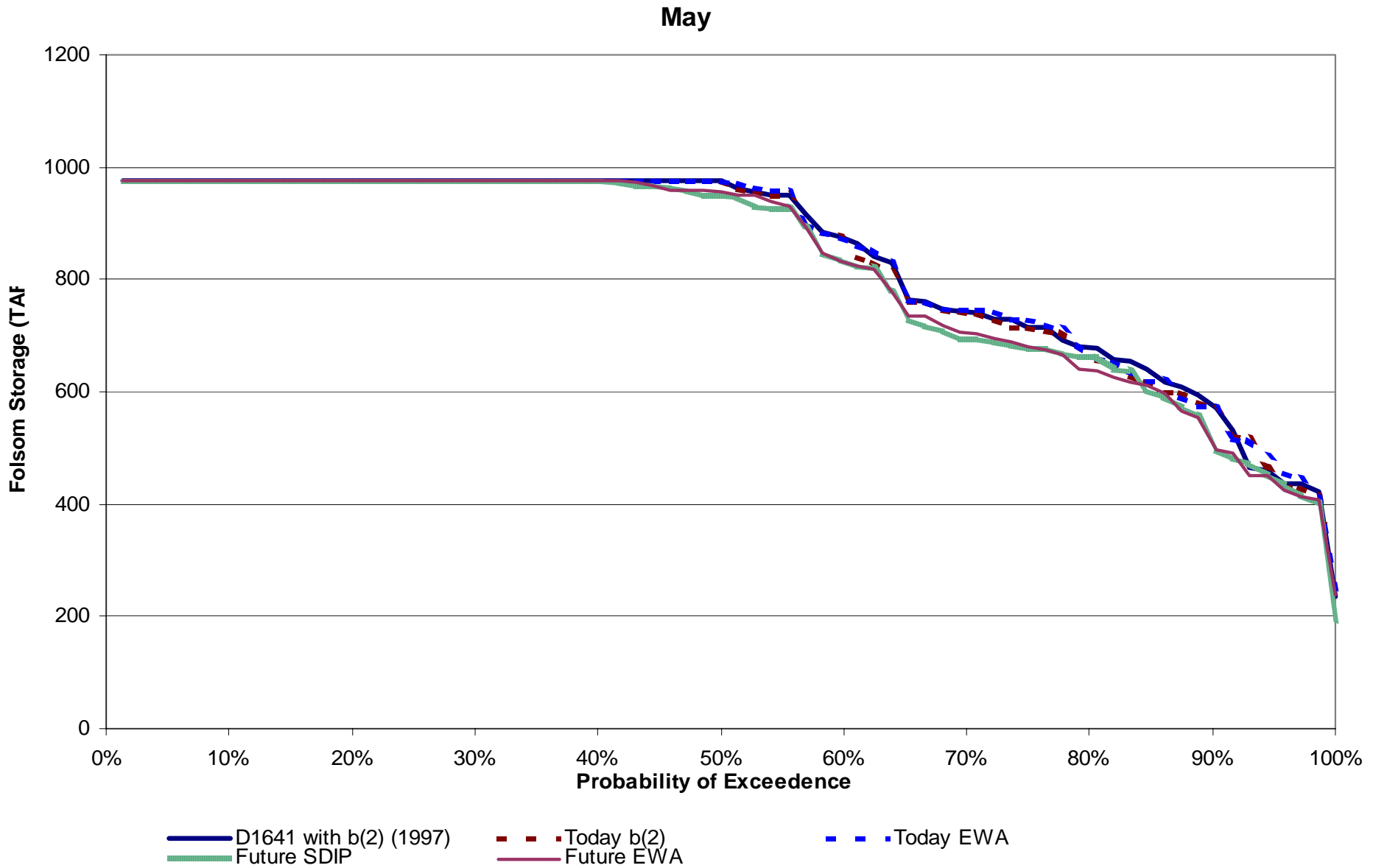
- Increased water demands in the future result in lower flows and increased temperatures
- Monitoring has shown American River steelhead with good condition factors rearing through the summer in high water temperatures
- The combined effect of temperature and predation likely limits in-river steelhead production
- The large American River steelhead run is produced mostly by Nimbus hatchery

American River

	Current Demands	Future Demands
Water Rights	50,850	311,250
M&I	205,000	376,300
Total	255,850	687,550

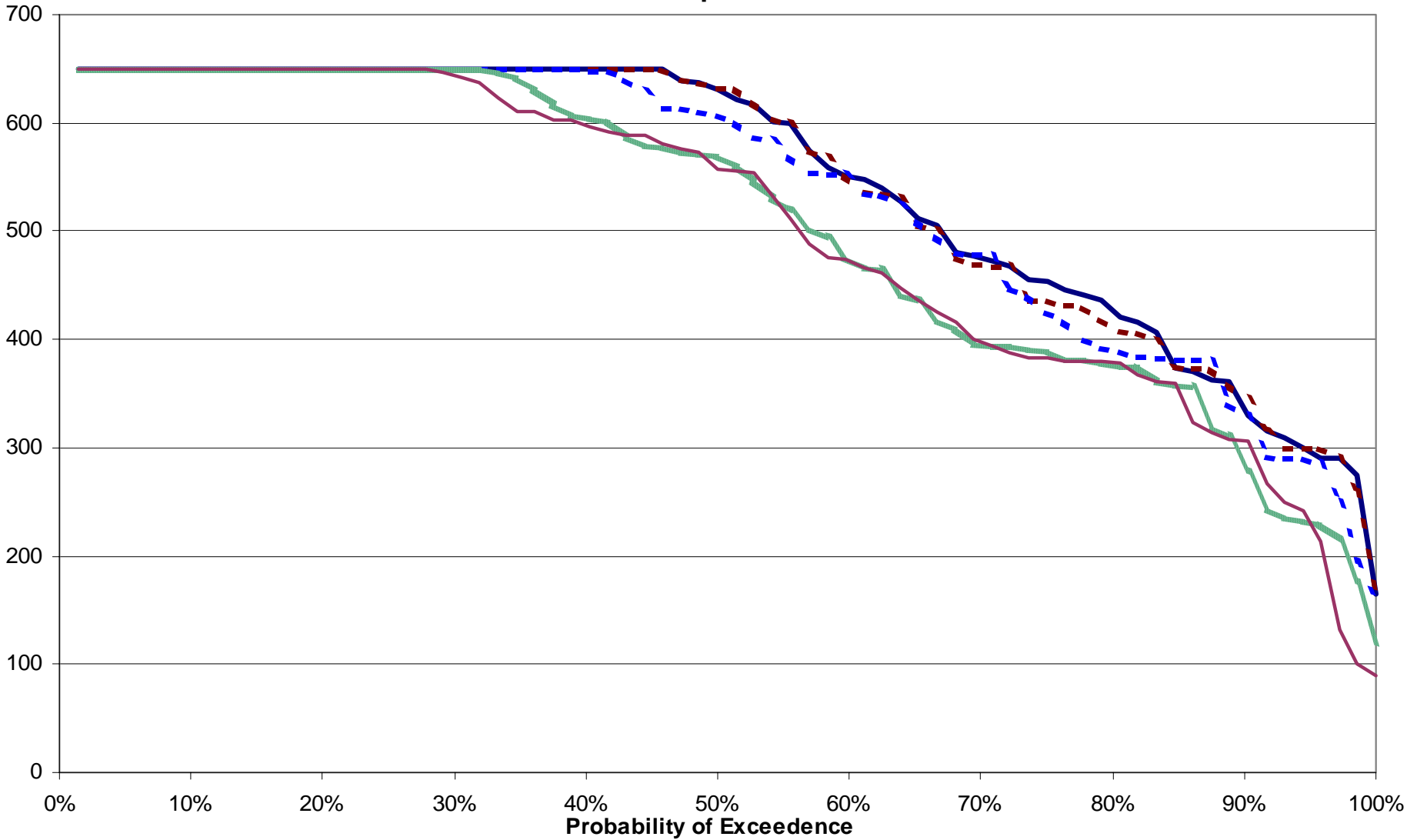
RECLAMATION

Folsom End of May Storage



Folsom End of September Storage

Sep



- D1641 with b(2) (1997)
- Future SDIP
- Today b(2)
- Future EWA
- Today EWA

Thank You

RECLAMATION